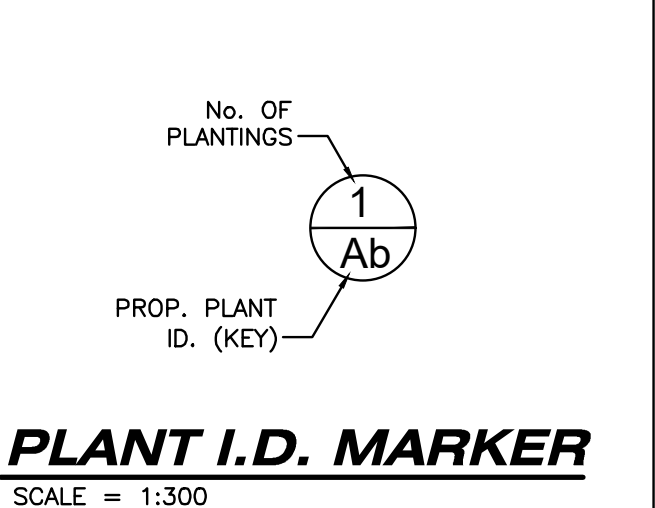


LEGAL INFORMATION
 PART OF
 LOT 9, CONCESSION 5
 IN THE
 CITY OF LONDON
 COUNTY OF MIDDLESEX



LANDSCAPE LEGEND:

- PROPOSED PLANTS
- LIMIT OF PROPOSED MULCH AREA
- BUILDING ENTRANCE
- OVERHEAD DOOR
- PROPOSED LIGHT-DUTY ASPHALT
- PROPOSED HEAVY-DUTY ASPHALT
- PROPOSED CONCRETE
- EXISTING BUILDING
- PROPOSED BUILDING
- TREE PROTECTION BARRIER
- EXISTING TREE TO REMAIN

REFERENCE DOCUMENTS:

1. STONEY CREEK SOUTH SUBDIVISION PLANS BY WHITNEY ENGINEERING STAMPED AUGUST 9, 2016.
2. TOPOGRAPHIC SURVEY BY MTE DATED OCTOBER 28, 2022.
3. TOPOGRAPHIC SURVEY BY LDS DATED JUNE 27, 2021 MODIFIED PER INSTRUCTIONS FROM LDS RECEIVED BY EMAIL SEPTEMBER 15, 2022 BY RELOCATING BASED ON COMMON LINWORK WITH AGM PLANS.
4. STONEY CREEK SOUTH SUBDIVISION PHASE 2 BY MTE/WHITNEY ACCEPTED BY CoFL DECEMBER 2, 2020.
5. SITE PLAN PROVIDED BY PATRICK DAVID TROTIER ARCHITECTS DATED FEBRUARY 2024.
6. DESIGN BRIEF PREPARED BY STRIK BALDINELLI MONIZ (SBM), PROJECT NO. SBM-22-1747, DATED FEBRUARY 2024.
7. CIVIL ENGINEERING PLANS BY SBM DATED FEBRUARY 2024.

LIST OF DRAWINGS

SHEET L1.1	LANDSCAPE PLAN - NORTHWEST LOCATION
SHEET L1.2	LANDSCAPE PLAN - NORTHEAST LOCATION
SHEET L1.3	LANDSCAPE PLAN - SOUTHWEST LOCATION
SHEET L1.4	LANDSCAPE PLAN - SOUTHEAST LOCATION
SHEET L2	LANDSCAPE NOTES, PLANT LIST, AND STANDARD DETAILS

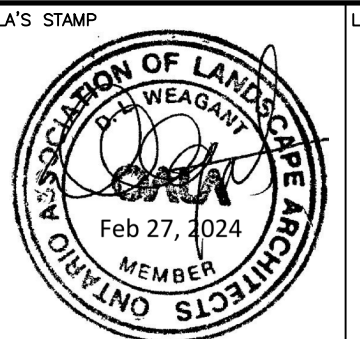
SEE SHEET L1.2 FOR CONTINUATION

SEE SHEET L1.3 FOR CONTINUATION

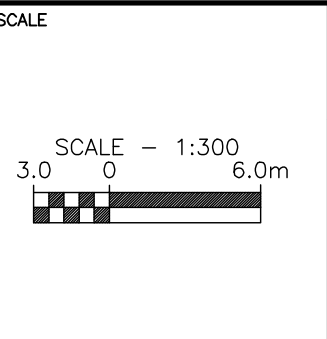
REFER TO NOTES, DETAILS, AND PLANT LIST ON SHEET L2

AS CONSTRUCTED SERVICES	COMPLETION	No.	REVISIONS	D/M/Y	BY	CONSULTANT
DESIGN	DW	1	ISSUED FOR SITE PLAN APPROVAL	19/10/22	MA	DAN WEAGANT, OALA, CSLA, LANDSCAPE ARCHITECT 703 FORMAN AVENUE STRATFORD, ON N5A 0G2 PH 519-694-5470 danweagant@rogers.com
DRAWN	MA	2	ISSUED FOR SITE PLAN APPROVAL	24/03/23	FZ	
CHECKED	LS	3	ISSUED FOR SITE PLAN APPROVAL 2	12/07/23	FZ	
APPROVED	HA	4	ISSUED FOR SITE PLAN APPROVAL 3	06/10/23	FZ	
DATE	26/02/2024	5	ISSUED FOR SITE PLAN APPROVAL 4	30/11/23	FZ	
CAD	22-1747	6	ISSUED FOR SITE PLAN APPROVAL 5	27/02/24	FZ	

DAN WEAGANT, OALA, CSLA, LANDSCAPE ARCHITECT
 703 FORMAN AVENUE
 STRATFORD, ON N5A 0G2
 PH 519-694-5470
 danweagant@rogers.com



CLIENT
STONEY CREEK COMMONS INC
 1701 RICHMOND CREEK COMMONS INC.
 LONDON, ON
 N5X 3Y2
 P: 519-850-0000
 E: INFO@WESTDELLCORP.COM

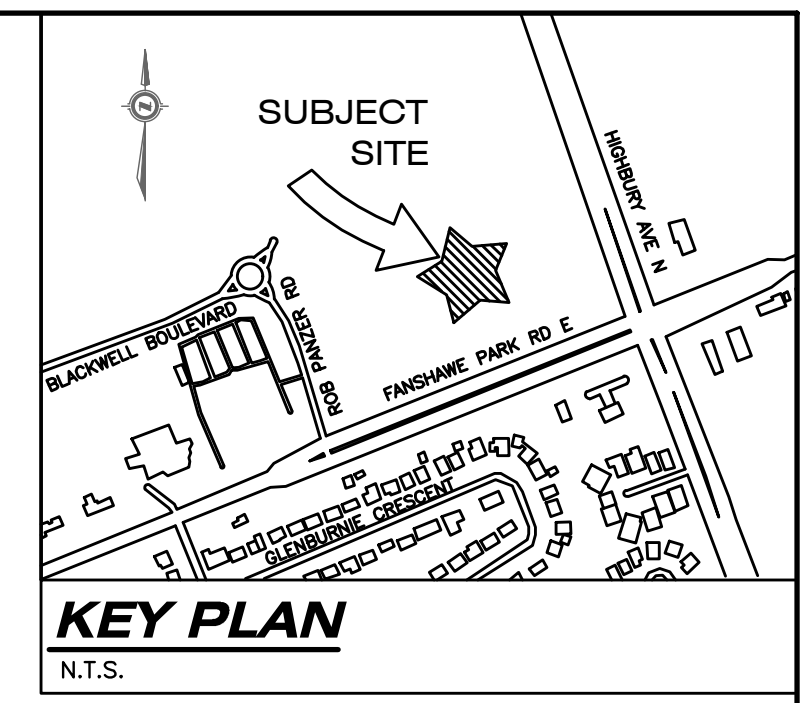


TITLE
LANDSCAPE PLAN - NORTHWEST LOCATION
PROPOSED COMMERCIAL DEVELOPMENT
 1300 FANSHAWE PARK ROAD EAST
 LONDON, ON.

PROJECT No.
SBM-22-1747

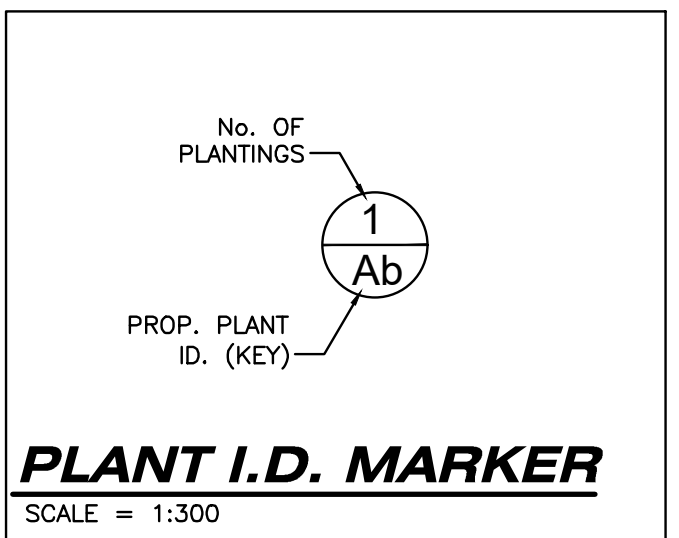
SHEET No.
L1.1

PLAN FILE No.
 -

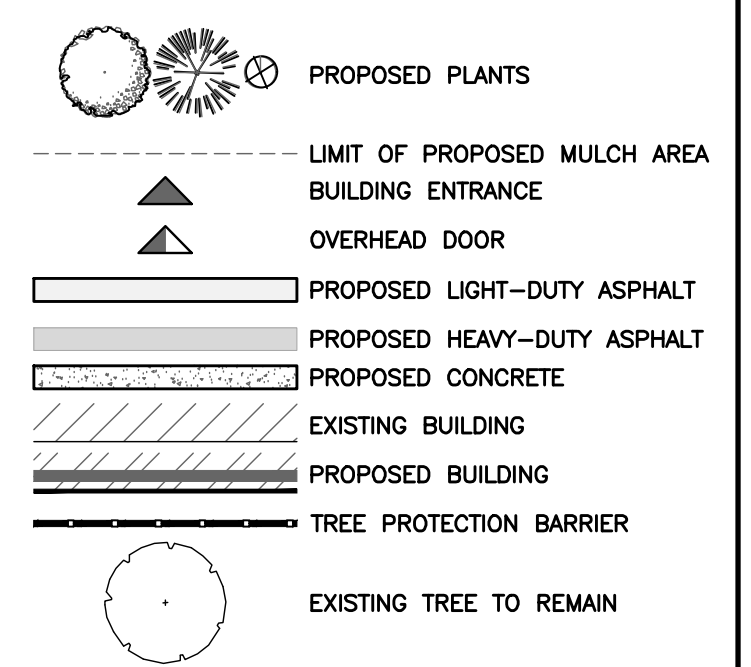


LEGAL INFORMATION

PART OF
LOT 9, CONCESSION 5
IN THE
CITY OF LONDON
COUNTY OF MIDDLESEX

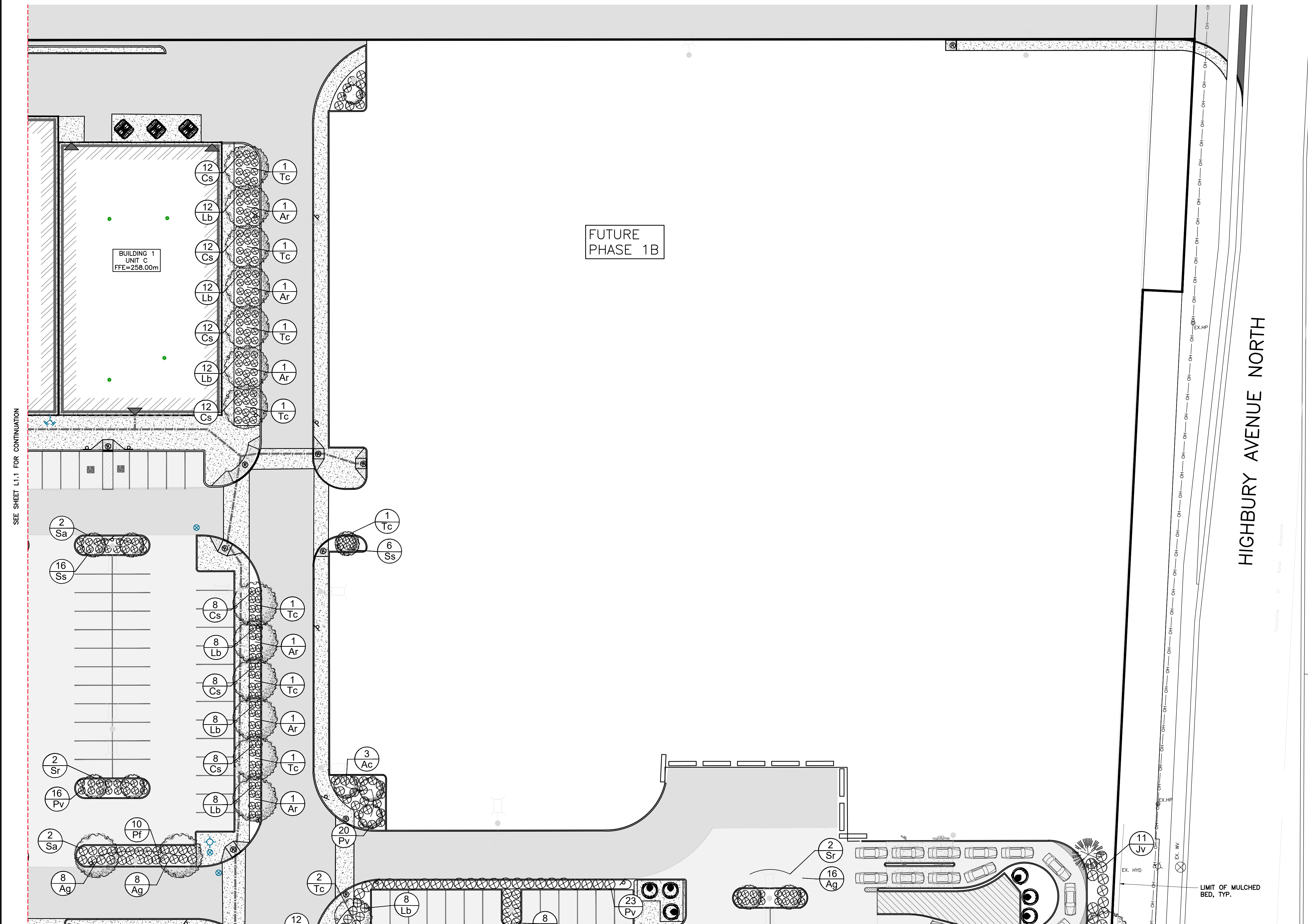


LANDSCAPE LEGEND:



REFERENCE DOCUMENTS:

1. STONEY CREEK SOUTH SUBDIVISION PLANS BY WHITNEY ENGINEERING STAMPED AUGUST 9, 2016.
2. TOPOGRAPHIC SURVEY BY MTE DATED OCTOBER 28, 2022.
3. TOPOGRAPHIC SURVEY BY LDS DATED JUNE 27, 2021 MODIFIED PER INSTRUCTIONS FROM LDS RECEIVED BY EMAIL SEPTEMBER 15, 2022 BY RELOCATING BASED ON COMMON LINENWORK WITH AGM PLANS.
4. STONEY CREEK SOUTH SUBDIVISION PHASE 2 BY MTE/WHITNEY ACCEPTED BY CoFL DECEMBER 2, 2020.
5. SITE PLAN PROVIDED BY PATRICK DAVID TROTTER ARCHITECTS DATED FEBRUARY 2024.
6. DESIGN BRIEF PREPARED BY STRIK BALDINELLI MONIZ (SBM), PROJECT NO. SBM-22-1747, DATED FEBRUARY 2024.
7. CIVIL ENGINEERING PLANS BY SBM DATED FEBRUARY 2024.

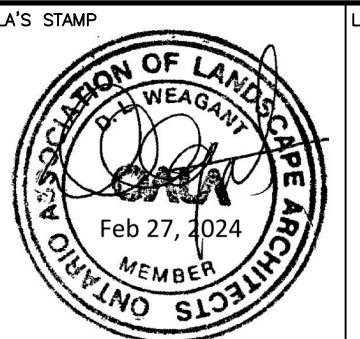


REFER TO NOTES, DETAILS, AND PLANT LIST ON SHEET L2

AS CONSTRUCTED SERVICES	COMPLETION
DESIGN DW	1
DRAWN MA	2
CHECKED LS	3
APPROVED HA	4
DATE	26/02/2024
CAD	22-1747

No.	REVISIONS	D/M/Y	BY	CONSULTANT
1	ISSUED FOR SITE PLAN APPROVAL	19/10/22	MA	
2	ISSUED FOR SITE PLAN APPROVAL	24/03/23	FZ	
3	ISSUED FOR SITE PLAN APPROVAL 2	12/07/23	FZ	
4	ISSUED FOR SITE PLAN APPROVAL 3	06/10/23	FZ	
5	ISSUED FOR SITE PLAN APPROVAL 4	30/11/23	FZ	
6	ISSUED FOR SITE PLAN APPROVAL 5	27/02/24	FZ	

DAN WEAGANT, OALA, CSLA, LANDSCAPE ARCHITECT
703 FORMAN AVENUE
STRATFORD, ON N5A 0G2
PH 519-694-5470
danweagant@rogers.com



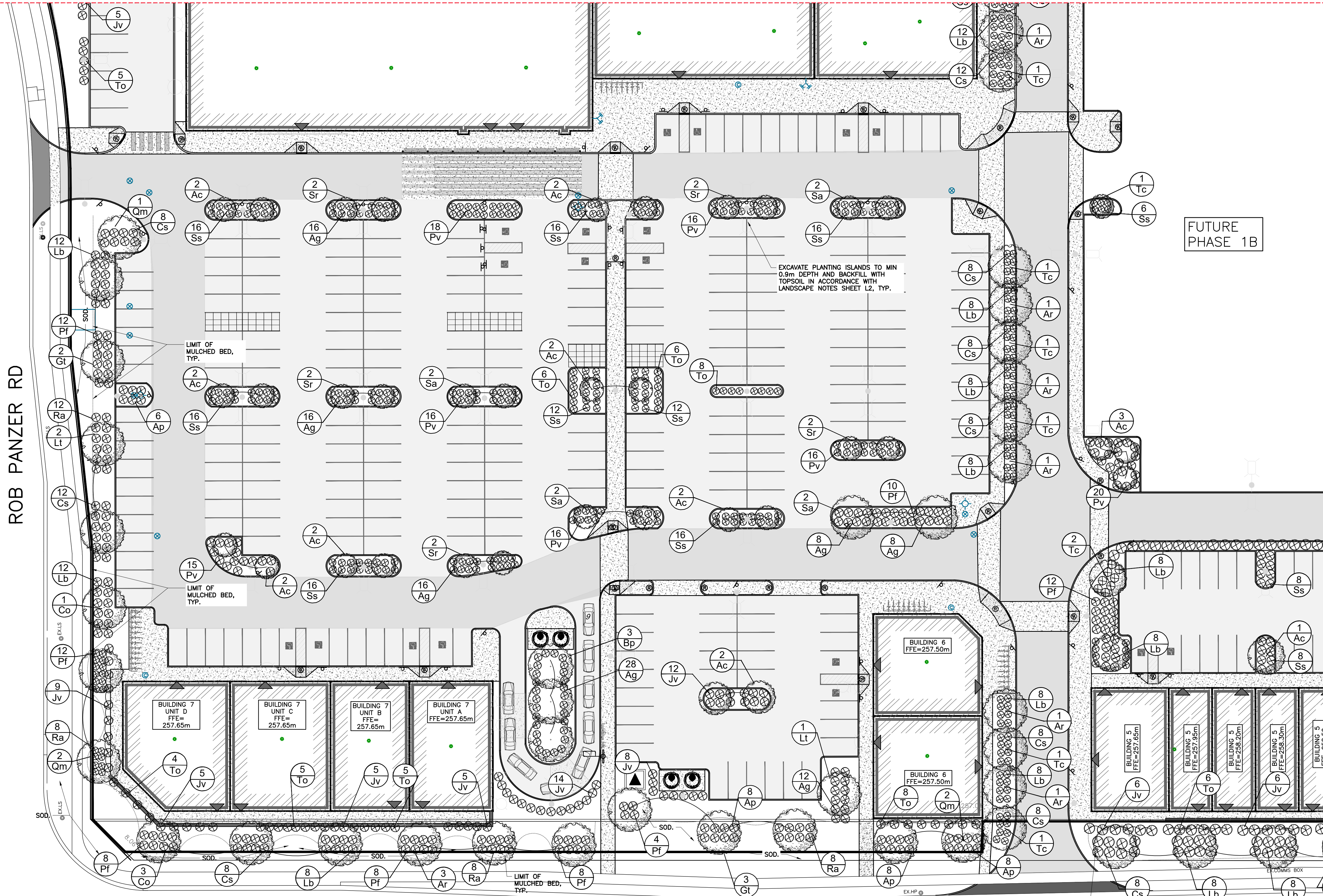
STONEY CREEK COMMONS INC
1701 RICHMOND CREEK COMMONS INC.
LONDON, ON
N5X 3Y2
P: 519-850-0000
E: INFO@WESTDELLCORP.COM

SCALE: 1:300
3.0 0 6.0m

TITLE: **LANDSCAPE PLAN - NORTHEAST LOCATION**
PROPOSED COMMERCIAL DEVELOPMENT
1300 FANSHAWE PARK ROAD EAST
LONDON, ON.

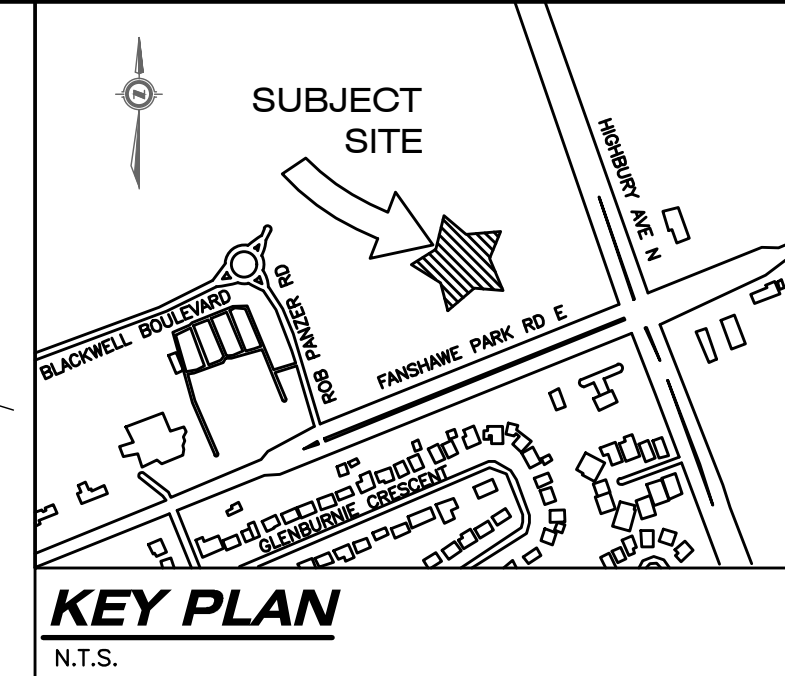
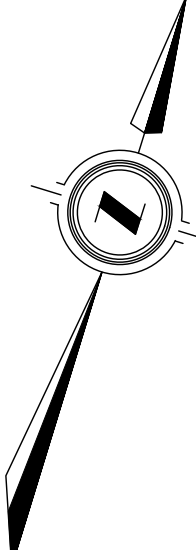
PROJECT No. **SBM-22-1747**
SHEET No. **L1.2**
PLAN FILE No. —

SEE SHEET L1.1 FOR CONTINUATION

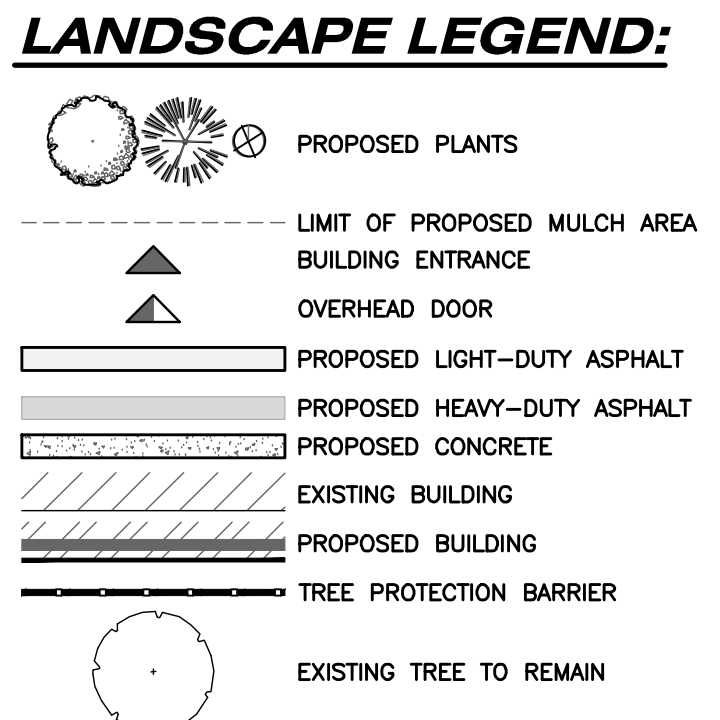
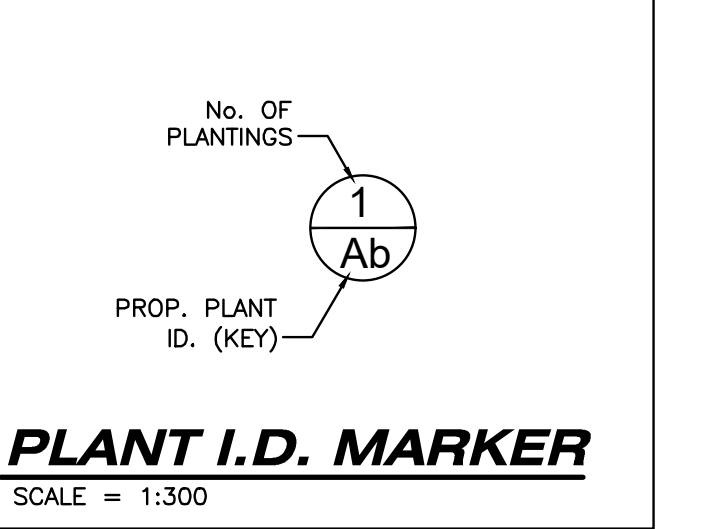


ROB PANZER RD

FANSHAWE PARK ROAD EAST



LEGAL INFORMATION
 PART OF
 LOT 9, CONCESSION 5
 IN THE
 CITY OF LONDON
 COUNTY OF MIDDLESEX



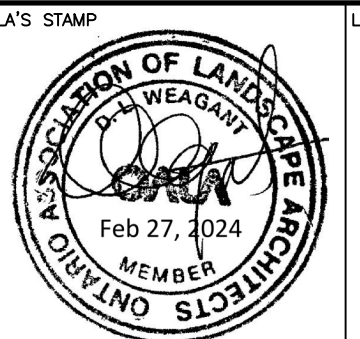
SEE SHEET L1.4 FOR CONTINUATION

- REFERENCE DOCUMENTS:**
1. STONEY CREEK SOUTH SUBDIVISION PLANS BY WHITNEY ENGINEERING STAMPED AUGUST 9, 2016.
 2. TOPOGRAPHIC SURVEY BY MTE DATED OCTOBER 28, 2022.
 3. TOPOGRAPHIC SURVEY BY LDS DATED JUNE 27, 2021 MODIFIED PER INSTRUCTIONS FROM LDS RECEIVED BY EMAIL SEPTEMBER 15, 2022 BY RELOCATING BASED ON COMMON LINENWORK WITH AGM PLANS.
 4. STONEY CREEK SOUTH SUBDIVISION PHASE 2 BY MTE/WHITNEY ACCEPTED BY CoL DECEMBER 2, 2020.
 5. SITE PLAN PROVIDED BY PATRICK DAVID TROTTER ARCHITECTS DATED FEBRUARY 2024.
 6. DESIGN BRIEF PREPARED BY STRIK BALDINELLI MONIZ (SBM), PROJECT NO. SBM-22-1747, DATED FEBRUARY 2024.
 7. CIVIL ENGINEERING PLANS BY SBM DATED FEBRUARY 2024.

REFER TO NOTES, DETAILS, AND PLANT LIST ON SHEET L2

AS CONSTRUCTED SERVICES	COMPLETION	No.	REVISIONS	D/M/Y	BY	CONSULTANT
DESIGN	DW	1	ISSUED FOR SITE PLAN APPROVAL	19/10/22	MA	DAN WEAGANT, OALA, CSLA, LANDSCAPE ARCHITECT 703 FORMAN AVENUE STRATFORD, ON N5A 0G2 PH 519-694-5470 danweagant@rogers.com
DRAWN	MA	2	ISSUED FOR SITE PLAN APPROVAL	24/03/23	FZ	
CHECKED	LS	3	ISSUED FOR SITE PLAN APPROVAL 2	12/07/23	FZ	
APPROVED	HA	4	ISSUED FOR SITE PLAN APPROVAL 3	06/10/23	FZ	
DATE	26/02/2024	5	ISSUED FOR SITE PLAN APPROVAL 4	30/11/23	FZ	
CAD	22-1747	6	ISSUED FOR SITE PLAN APPROVAL 5	27/02/24	FZ	

DAN WEAGANT, OALA, CSLA, LANDSCAPE ARCHITECT
 703 FORMAN AVENUE
 STRATFORD, ON N5A 0G2
 PH 519-694-5470
 danweagant@rogers.com



CLIENT
STONEY CREEK COMMONS INC
 1701 RICHMOND CREEK COMMONS INC.
 LONDON, ON
 N5X 3Y2
 P: 519-850-0000
 E: INFO@WESTDELLCORP.COM

SCALE
 1:300
 3.0 0 6.0m

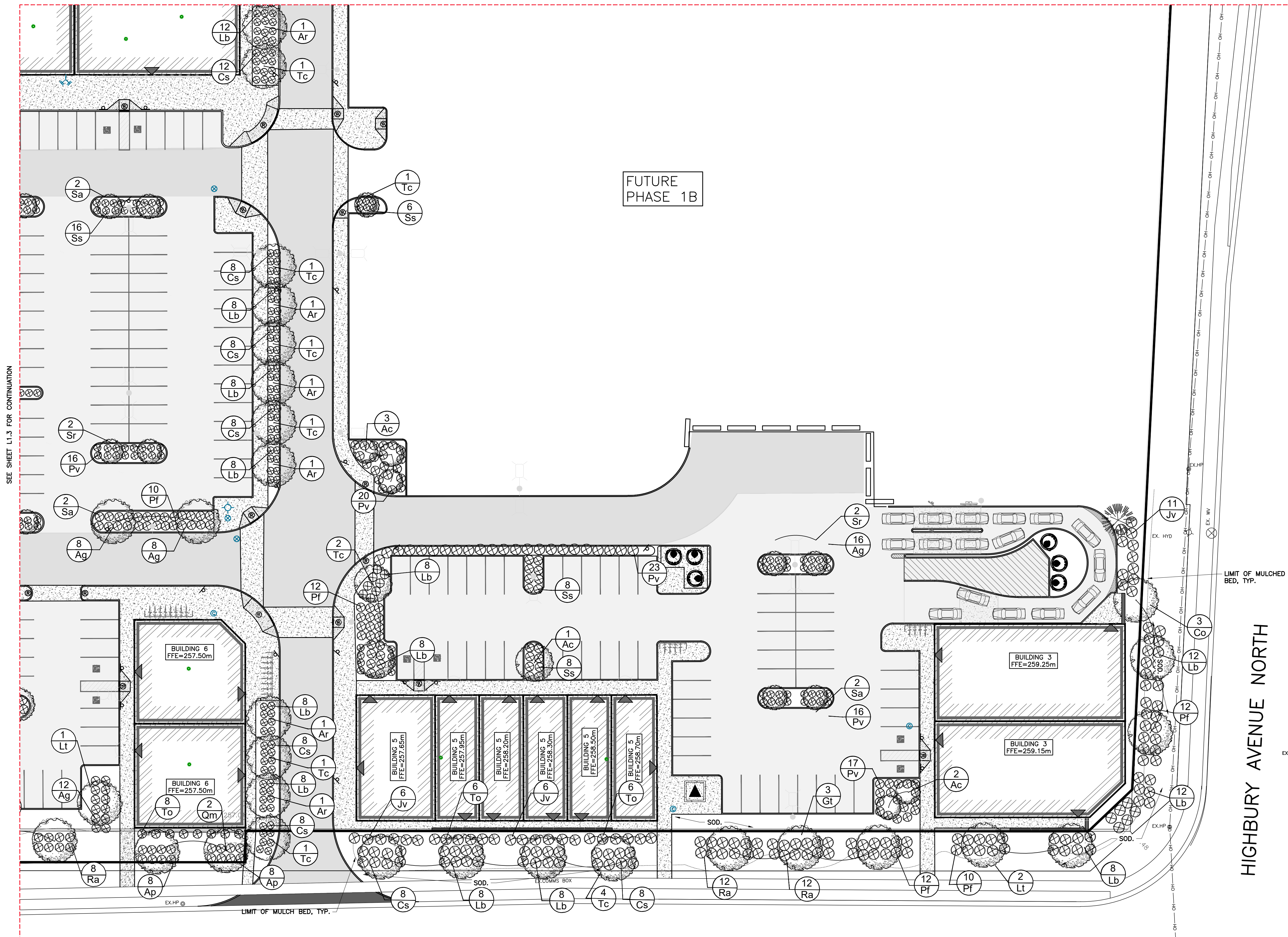
TITLE
LANDSCAPE PLAN - SOUTHWEST
PROPOSED COMMERCIAL DEVELOPMENT
 1300 FANSHAWE PARK ROAD EAST
 LONDON, ON.

PROJECT No.
SBM-22-1747

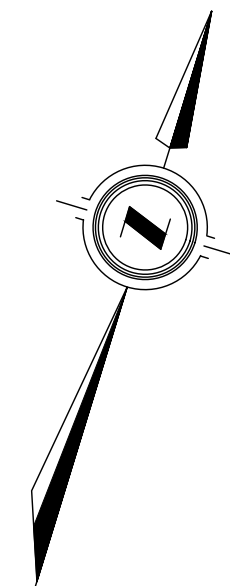
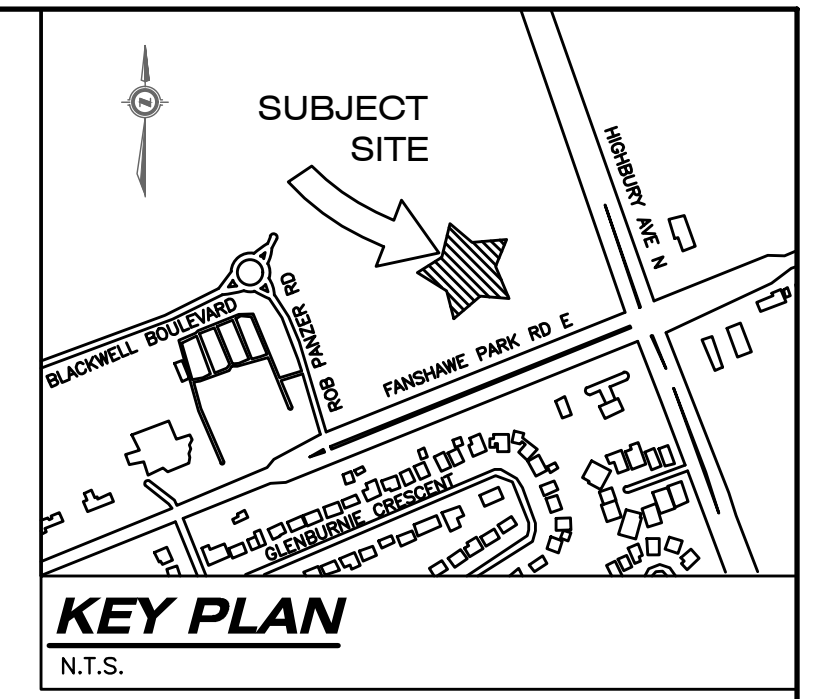
SHEET No.
L1.3

PLAN FILE No.
 -

SEE SHEET L1.2 FOR CONTINUATION

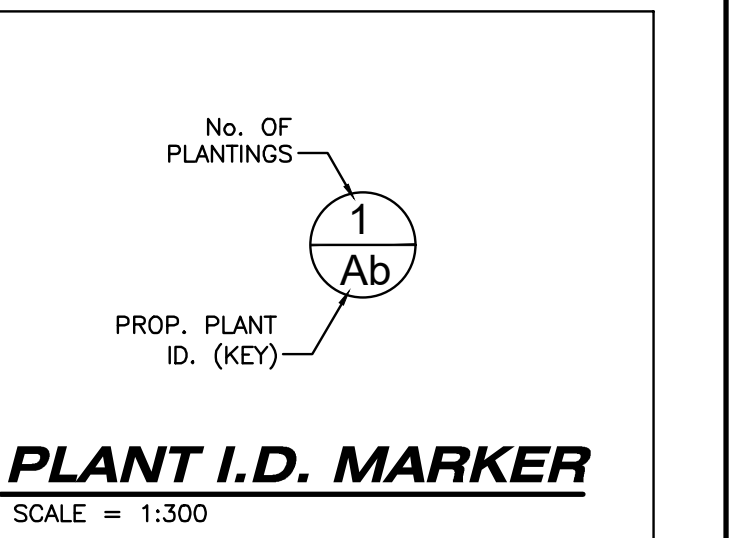


SEE SHEET L1.3 FOR CONTINUATION

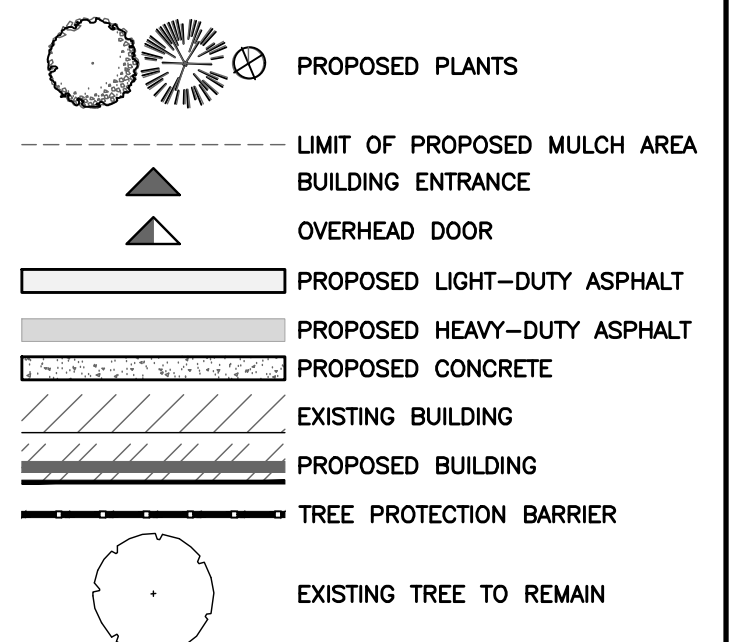


LEGAL INFORMATION

PART OF
LOT 9, CONCESSION 5
IN THE
CITY OF LONDON
COUNTY OF MIDDLESEX



LANDSCAPE LEGEND:



REFERENCE DOCUMENTS:

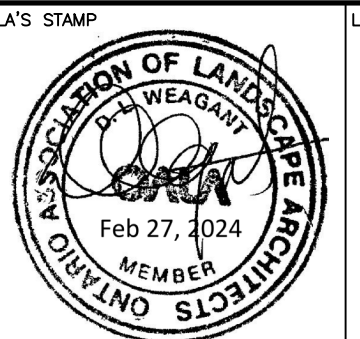
1. STONEY CREEK SOUTH SUBDIVISION PLANS BY WHITNEY ENGINEERING STAMPED AUGUST 9, 2016.
2. TOPOGRAPHIC SURVEY BY MTE DATED OCTOBER 26, 2022.
3. TOPOGRAPHIC SURVEY BY LDS DATED JUNE 27, 2021 MODIFIED PER INSTRUCTIONS FROM LDS RECEIVED BY EMAIL SEPTEMBER 15, 2022 BY RELOCATING BASED ON COMMON LINWORK WITH AGM PLANS.
4. STONEY CREEK SOUTH SUBDIVISION PHASE 2 BY MTE/WHITNEY ACCEPTED BY CoL DECEMBER 2, 2020.
5. SITE PLAN PROVIDED BY PATRICK DAVID TROTTER ARCHITECTS DATED FEBRUARY 2024.
6. DESIGN BRIEF PREPARED BY STRIK BALDINELLI MONIZ (SBM), PROJECT NO. SBM-22-1747, DATED FEBRUARY 2024.
7. CIVIL ENGINEERING PLANS BY SBM DATED FEBRUARY 2024.

REFER TO NOTES, DETAILS, AND PLANT LIST ON SHEET L2

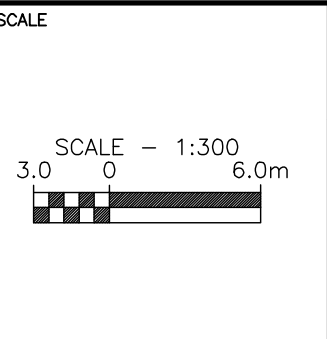
AS CONSTRUCTED SERVICES	COMPLETION	No.	REVISIONS	D/M/Y	BY	CONSULTANT
DESIGN	DW	1	ISSUED FOR SITE PLAN APPROVAL	19/10/22	MA	DAN WEAGANT, OALA, CSLA, LANDSCAPE ARCHITECT 703 FORMAN AVENUE STRATFORD, ON N5A 0G2 PH 519-694-5470 danweagant@rogers.com
DRAWN	MA	2	ISSUED FOR SITE PLAN APPROVAL	24/03/23	FZ	
CHECKED	LS	3	ISSUED FOR SITE PLAN APPROVAL 2	12/07/23	FZ	
APPROVED	HA	4	ISSUED FOR SITE PLAN APPROVAL 3	06/10/23	FZ	
DATE	26/02/2024	5	ISSUED FOR SITE PLAN APPROVAL 4	30/11/23	FZ	
CAD	22-1747	6	ISSUED FOR SITE PLAN APPROVAL 5	27/02/24	FZ	

AS CONSTRUCTED SERVICES	COMPLETION	No.	REVISIONS	D/M/Y	BY	CONSULTANT
DESIGN	DW	1	ISSUED FOR SITE PLAN APPROVAL	19/10/22	MA	DAN WEAGANT, OALA, CSLA, LANDSCAPE ARCHITECT 703 FORMAN AVENUE STRATFORD, ON N5A 0G2 PH 519-694-5470 danweagant@rogers.com
DRAWN	MA	2	ISSUED FOR SITE PLAN APPROVAL	24/03/23	FZ	
CHECKED	LS	3	ISSUED FOR SITE PLAN APPROVAL 2	12/07/23	FZ	
APPROVED	HA	4	ISSUED FOR SITE PLAN APPROVAL 3	06/10/23	FZ	
DATE	26/02/2024	5	ISSUED FOR SITE PLAN APPROVAL 4	30/11/23	FZ	
CAD	22-1747	6	ISSUED FOR SITE PLAN APPROVAL 5	27/02/24	FZ	

DAN WEAGANT, OALA, CSLA, LANDSCAPE ARCHITECT
703 FORMAN AVENUE
STRATFORD, ON N5A 0G2
PH 519-694-5470
danweagant@rogers.com



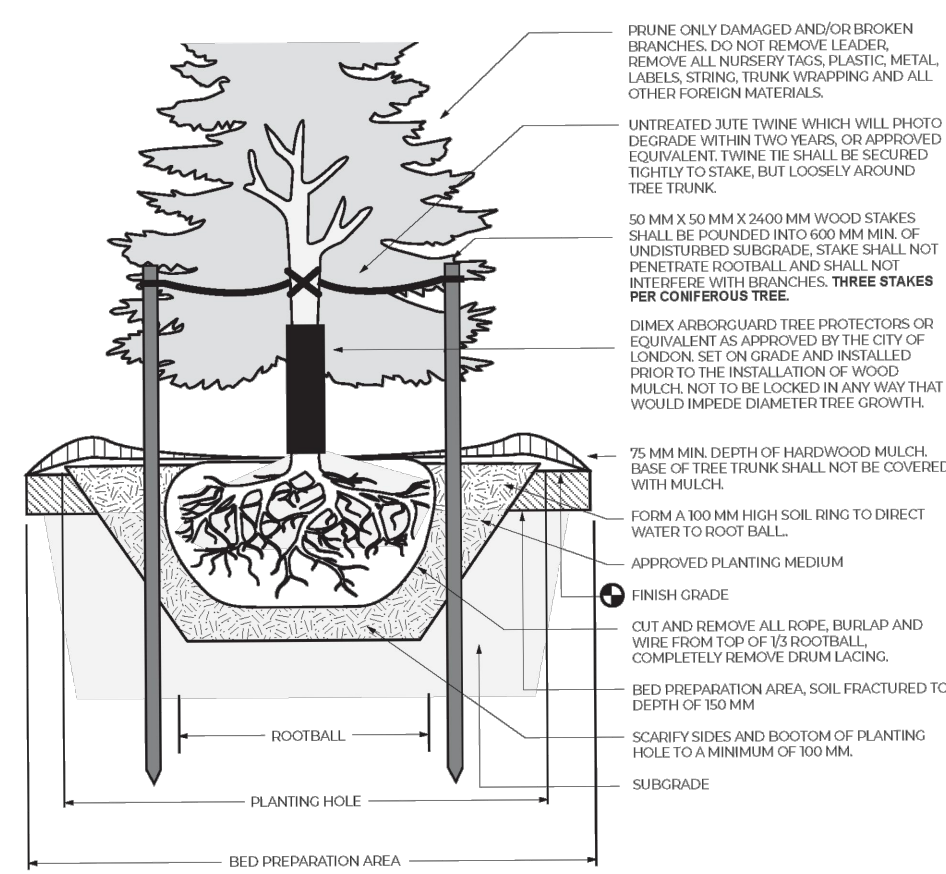
STONEY CREEK COMMONS INC
1701 RICHMOND CREEK COMMONS INC.
LONDON, ON
N5X 3Y2
P: 519-850-0000
E: INFO@WESTDELLCORP.COM



TITLE
LANDSCAPE PLAN - SOUTHEAST
PROPOSED COMMERCIAL DEVELOPMENT
1300 FANSHAWE PARK ROAD EAST
LONDON, ON.

PROJECT No.
SBM-22-1747
SHEET No.
L1.4
PLAN FILE No.
-

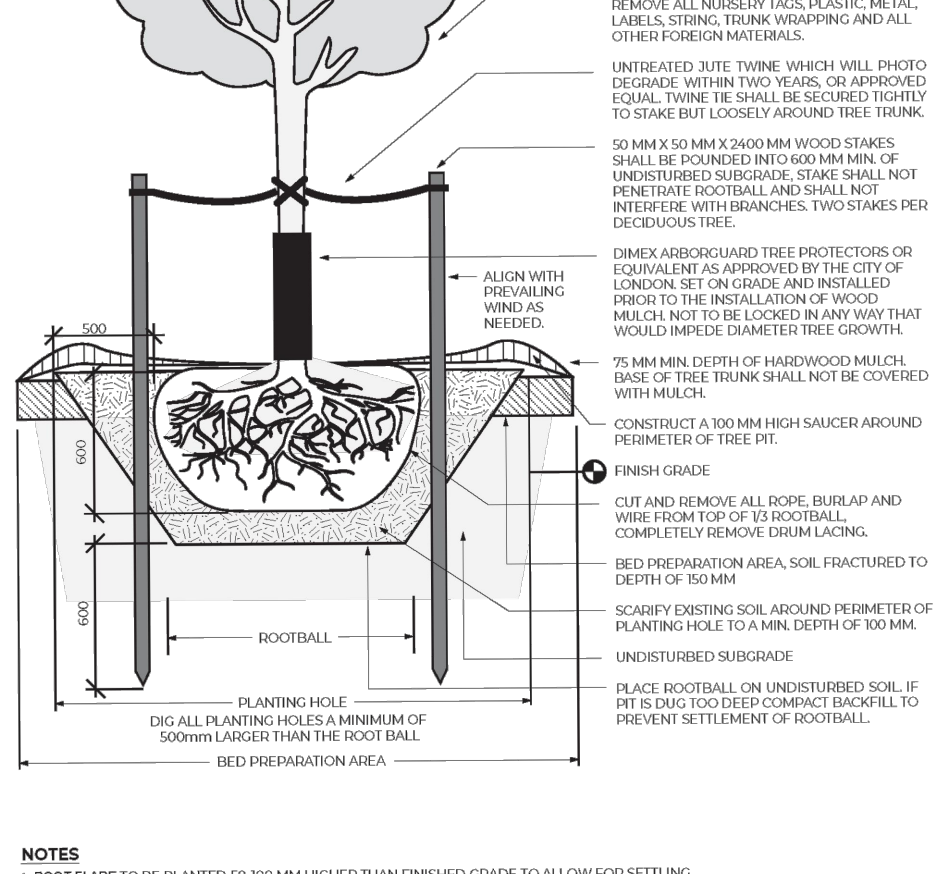
D-31B Coniferous Tree Planting Detail



- NOTES**
1. ROOT FLARE TO BE PLANTED 50-100MM HIGHER THAN FINISHED GRADE TO ALLOW FOR SETTLING.
 2. THE CITY OF LONDON WILL BE RESPONSIBLE FOR ACCEPTED SAMPLING METHODS IN CONJUNCTION WITH THE CONTRACTOR TO DETERMINE IF EXISTING AND EXCAVATED SOIL IS ACCEPTABLE GROWING MEDIUM OR IF AUGMENTATION IS REQUIRED PRIOR TO CONSTRUCTION. REFER TO SPECIFICATION AND TO BEST PRACTICE INFORMATION.
 3. SAUCER TO BE SOAKED WITH WATER AND MULCHED IMMEDIATELY FOLLOWING PLANTING.
 4. ALL DIMENSIONS ARE IN MILLIMETERS UNLESS OTHERWISE NOTED.
 5. ALL TWINE AND BURLAP AROUND ROOTBALL MUST BE 100% DEGRADABLE. NYLON ROPE WILL NOT BE ACCEPTED.
 6. CALIBER OR HEIGHT OF TREE MUST MEET CONTRACT REQUIREMENTS.
 7. PLANTING DETAIL TO BE READ IN CONJUNCTION WITH TREE PLANTING SPECIFICATIONS.
 8. ALL STAKES AND SUPPORT SYSTEMS TO BE REMOVED AFTER ONE FULL GROWING SEASON.

CONIFEROUS TREE PLANTING DETAIL
SCALE NTS

D-31A Deciduous Tree Planting Detail



- NOTES**
1. ROOT FLARE TO BE PLANTED 50-100MM HIGHER THAN FINISHED GRADE TO ALLOW FOR SETTLING.
 2. THE CITY OF LONDON WILL BE RESPONSIBLE FOR ACCEPTED SAMPLING METHODS IN CONJUNCTION WITH THE CONTRACTOR TO DETERMINE IF EXISTING AND EXCAVATED SOIL IS ACCEPTABLE GROWING MEDIUM OR IF AUGMENTATION IS REQUIRED PRIOR TO CONSTRUCTION. REFER TO SPECIFICATION AND TO BEST PRACTICE INFORMATION.
 3. SAUCER TO BE SOAKED WITH WATER AND MULCHED IMMEDIATELY FOLLOWING PLANTING.
 4. ALL DIMENSIONS ARE IN MILLIMETERS UNLESS OTHERWISE NOTED.
 5. ALL TWINE AND BURLAP AROUND ROOTBALL MUST BE 100% DEGRADABLE. NYLON ROPE WILL NOT BE ACCEPTED.
 6. CALIBER OR HEIGHT OF TREE MUST MEET CONTRACT REQUIREMENTS.
 7. PLANTING DETAIL TO BE READ IN CONJUNCTION WITH TREE PLANTING SPECIFICATIONS.
 8. ALL STAKES AND SUPPORT SYSTEMS TO BE REMOVED AFTER ONE FULL GROWING SEASON.

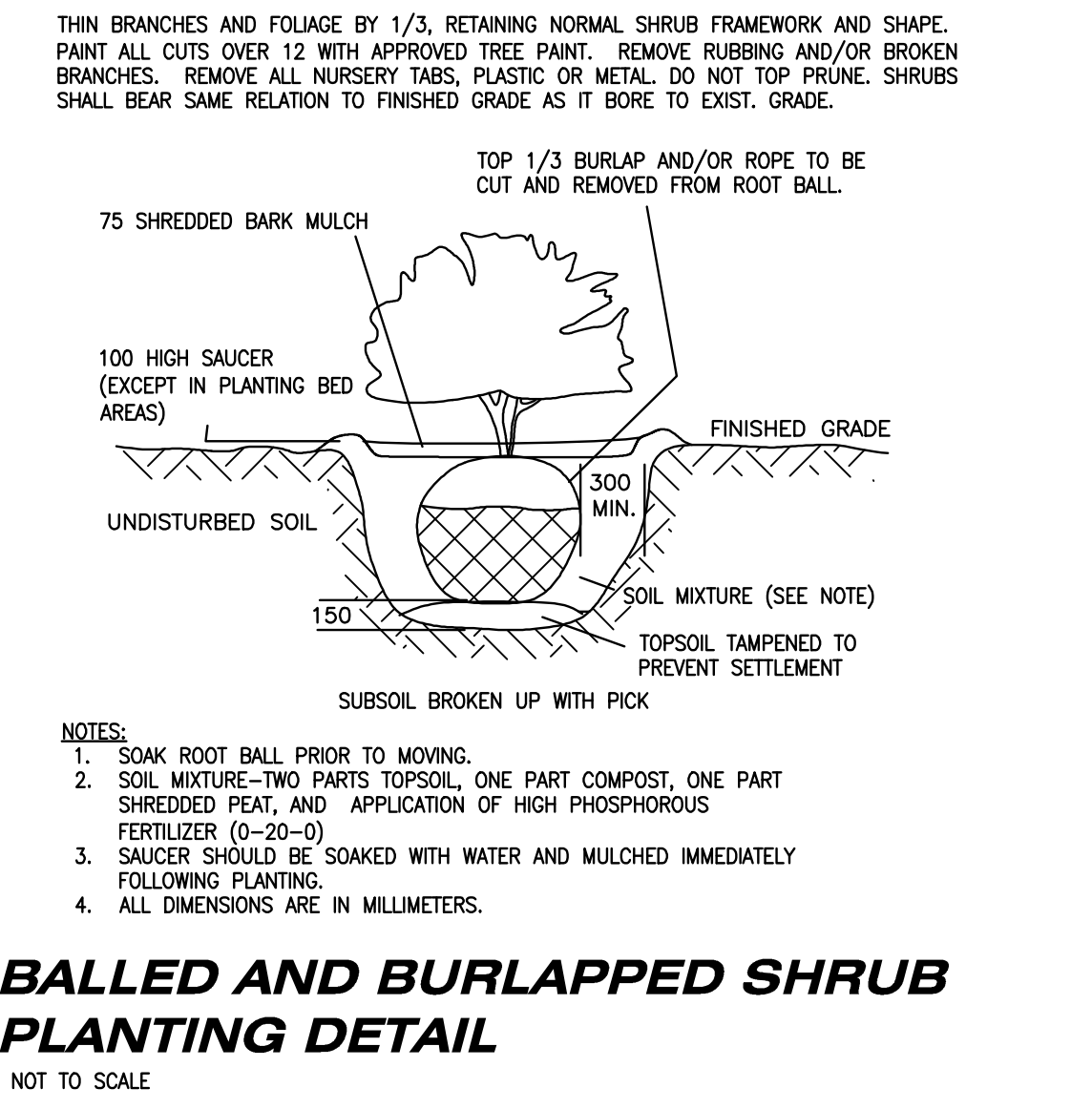
DECIDUOUS TREE PLANTING DETAIL
SCALE NTS

PLANT LIST

KEY	No.	NAME	SIZE & CONDITION
Jv	91	Juniperus virginiana – Eastern Red Cedar	150 cm height; potted
To	64	Thuja occidentalis – Eastern White Cedar	150 cm height; potted
Pr	6	Pinus resinosa – Red Pine	200 cm height; wire basket (W.B.)
Ar	14	Acer rubrum – Red Maple	60mm caliper; W.B.
Ac	22	Amelanchier canadensis - Serviceberry	45mm caliper; W.B.
Bp	5	Betulus papyrifera – White Birch	60mm caliper; W.B.
Co	7	Celtis occidentalis – Common Hackberry	60 mm caliper; W.B.
Gt	8	Gleditsia triacanthos var. inermis 'Streetkeeper' – Streetkeeper Honey Locust	60 mm caliper; W.B.
Lt	5	Liriodendron tulipifera – Tulip Tree	60mm caliper; W.B.
Qm	5	Quercus macrocarpa – Burr Oak	60 mm caliper; W.B.
Sa	10	Sorbus aucuparia - Mountainash	45mm caliper; W.B.
Sr	12	Syringa reticulata – Ivory Silk Tree Lilac	45mm caliper; W.B.
Tc	16	Tilia cordata 'Corinthian' – Corinthian Littleleaf Linden	60mm caliper; W.B.
Ap	62	Aesculus parviflora – Bottlebrush Buckeye	80 cm height; potted
Cs	140	Cornus sericea – Red Osier Dogwood	60 cm height; potted
Lb	176	Lindera benzoin – Spicebush	60 cm height ; potted
Pf	108	Potentilla fruticosa – Bush Cinquefoil	60 cm height; potted
Ra	68	Rhus aromatica – Fragrant Sumac	60 cm height; potted
Ag	120	Andropogon gerardii – Big Blue Stem	2 gallon pot
Pv	173	Panicum virgatum 'Dallas Blues' – Dallas Blues Switch Grass	2 gallon pot
Ss	142	Schizachyrium scoparium – Little Bluestem	2 gallon pot

LANDSCAPE NOTES

1. SITE PLAN PROVIDED BY PATRICK DAVID TROTTIER ARCHITECTS DATED FEBRUARY 2024.
2. LANDSCAPE PLAN SHOULD BE READ IN CONJUNCTION WITH CURRENT SITE SERVICING AND SITE GRADING PLANS.
3. LAYOUT OF ALL PLANT MATERIAL IS TO BE APPROVED IN THE FIELD BY THE LANDSCAPE ARCHITECT PRIOR TO INSTALLATION.
4. CONTRACTOR IS RESPONSIBLE FOR UTILITY AND SERVICING LOCATES. ANY DAMAGE TO UTILITIES IS THE RESPONSIBILITY OF THE CONTRACTOR FOR REPAIR, TO THE SATISFACTION OF THE APPLICABLE UTILITY / AGENCY.
5. CONTRACTOR IS REQUIRED TO CONFIRM ANY DISCREPANCIES, WITH RESPECT TO QUANTITIES OR LOCATION OF PLANT MATERIAL OR OTHER ELEMENTS INDICATED ON THE PLAN. DO NOT PROCEED IN UNCERTAINTY. OBTAIN DIRECTION AS REQUIRED FROM LANDSCAPE ARCHITECT.
6. THE LANDSCAPE ARCHITECT RESERVES THE RIGHT TO SELECT / APPROVE PLANT MATERIALS AT SOURCE, WITHOUT LIMITING THE RIGHT TO REFUSE PLANT MATERIAL AT A FUTURE DATE WHERE THERE ARE CLEAR VIOLATIONS OF SPECIFIED CHARACTERISTICS.
7. CONTRACTOR IS TO NOTIFY THE LANDSCAPE ARCHITECT UPON COMPLETION OF INSTALLATION FOR THE PURPOSES OF PREPARING A CERTIFICATION OF COMPLETION.
8. CONTRACTOR IS RESPONSIBLE FOR ALL INSTALLATIONS UNTIL ACCEPTED BY THE OWNER.
9. SUBSTITUTION OF ANY PLANT MATERIAL IS SUBJECT TO WRITTEN APPROVAL OF THE LANDSCAPE ARCHITECT.
10. TREE PITS SHALL BE EXCAVATED TO A MINIMUM OF 750mm WIDER THAN THE ROOT BALL OF THE TREE BEING INSTALLED. TREES SHALL BE PLANTED SO THAT THE TOP OF THE ROOT BALL IS 100 – 150mm ABOVE THE ELEVATION OF THE TOP OF THE SURROUNDING CURB.
11. SHRUBS AND ORNAMENTAL GRASSES SHALL BE PLANTED IN A MINIMUM 450mm DEPTH OF TOPSOIL / PLANTING MEDIUM.
12. REMOVE WIRE BASKETS PRIOR TO INSTALLATION AND REMOVE FROM SITE. BURLAP IS TO BE CUT AWAY FROM THE STEM AND ROOT BALL TO A DEPTH OF 300mm FROM THE FINISHED PLANTING SURFACE.
13. REMOVE GUY WIRES, STAKES AND OTHER STABILIZING MATERIALS FROM TREES UPON ACCEPTANCE BY THE OWNER OR UPON COMPLETION OF THE WARRANTY PERIOD, WHICHEVER IS LATER.
14. ENSURE COMPLETED PLANTING SOIL SURFACE IS MOUNDING TO PROVIDE POSITIVE DRAINAGE TO ADJACENT TOP OF CURB ENCLOSURE.
15. ALL TOPSOIL FOR PLANTING SHALL BE COMPRISED OF CLAY / SANDY LOAM WITH A 4 TO 12% ORGANIC MATTER, CAPABLE OF SUSTAINING APPROPRIATE GROWTH OF THE PLANTS. THE SOIL SHALL BE FREE OF CONTAMINANTS, ROOTS AND STONES LARGER THAN 25mm IN DIAMETER. REQUIRED PH FOR THIS INSTALLATION IS BETWEEN 6.0 AND 7.0. THE LANDSCAPE ARCHITECT / OWNER RESERVES THE RIGHT TO INSPECT AND ACCEPT / REJECT TOPSOIL PRIOR TO APPLICATION.
16. MULCH SHALL BE PLACED AT A MINIMUM DEPTH OF 75mm THROUGHOUT THE PLANTING AREA. MULCH IS TO BE COMPOSED OF AGED CEDAR MULCH OR AN ALLOWABLE SUBSTITUTION UPON ACCEPTANCE BY THE LANDSCAPE ARCHITECT.



S:\2022 John SBM-22-1747 - 1300 Fanshawe Park Rd\03 Production\Drawings\SBM-22-1747-1200 Fanshawe Park Rd - Landscape\Planting

AS CONSTRUCTED SERVICES	COMPLETION	No.	REVISIONS	D/M/Y	BY	CONSULTANT	LA'S STAMP	LA'S STAMP	CLIENT	SCALE	TITLE	PROJECT No.	
	DESIGN	DW	1	ISSUED FOR SITE PLAN APPROVAL	19/10/22	MA	DAN WEAGANT, OALA, CSLA, LANDSCAPE ARCHITECT 703 FORMAN AVENUE STRATFORD, ON N5A 0G2 PH 519-694-5470 danweagant@rogers.com		STONEY CREEK COMMONS INC 1701 RICHMOND CREEK COMMONS INC. LONDON, ON N5X 3Y2 P: 519-850-0000 E: INFO@WESTDELLCORP.COM	N/A	NOTES, PLANT LIST, AND STANDARD DETAILS PROPOSED COMMERCIAL DEVELOPMENT 1300 FANSHAWE PARK ROAD EAST LONDON, ON.	SBM-22-1747	
	DRAWN	MA	2	ISSUED FOR SITE PLAN APPROVAL	24/03/23	FZ						SHEET No.	L2
	CHECKED	LS	3	ISSUED FOR SITE PLAN APPROVAL 2	12/07/23	FZ						PLAN FILE No.	-
	APPROVED	HA	4	ISSUED FOR SITE PLAN APPROVAL 3	06/10/23	FZ							
	DATE	26/02/2024	5	ISSUED FOR SITE PLAN APPROVAL 4	30/11/23	FZ							
	CAD	22-1747	6	ISSUED FOR SITE PLAN APPROVAL 5	27/02/24	FZ							