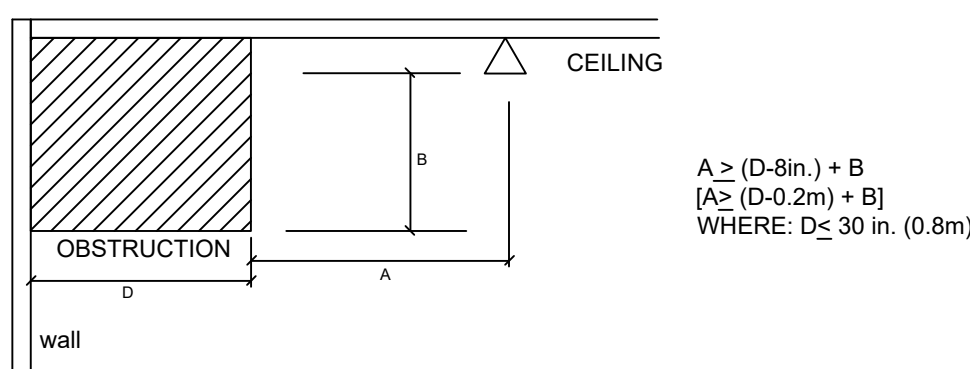
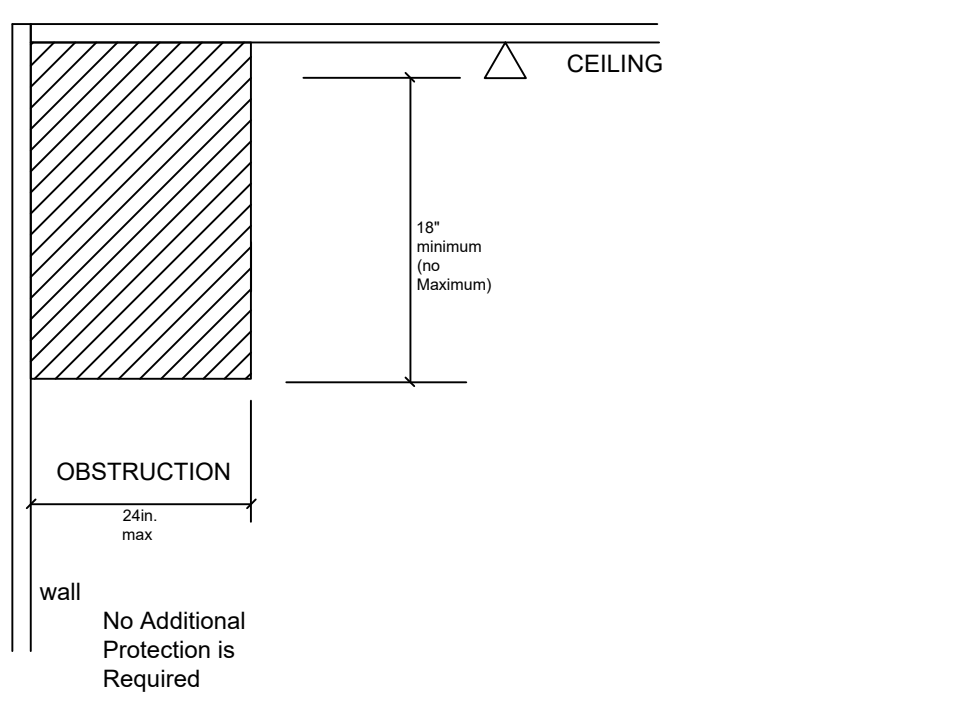


NPFA 13 2013 - TABLE 8.6.5.1.2		NPFA 13 2013 - FIGURE 8.6.5.1.2(a)
DISTANCE FROM SIDEWALL SPRINKLERS TO SIDE OF OBSTRUCTION (A)	MAXIMUM ALLOWABLE DISTANCE OF DEFLECTOR ABOVE BOTTOM OF OBSTRUCTION (IN.) (B)	
Less than 1ft	0	
1ft to less than 1ft. 6 in.	2-1/2	
1ft. 6 in. to less than 2 ft.	3-1/2	
2ft to less than 2ft. 6 in.	5-1/2	
2ft. 6 in. to less than 3 ft.	7-1/2	
3ft to less than 3ft. 6 in.	9-1/2	
3ft. 6 in. to less than 4 ft.	12	
4ft to less than 4ft. 6 in.	14	
4ft. 6 in. to less than 5 ft.	16-1/2	
5ft to less than 5ft. 6 in.	18	
5ft. 6 in. to less than 6 ft.	20	
6ft to less than 6ft. 6 in.	24	
6ft. 6 in. to less than 7 ft.	30	
7ft and greater	35	

NPFA 13 2013 - FIGURE 8.6.5.1.2(b)

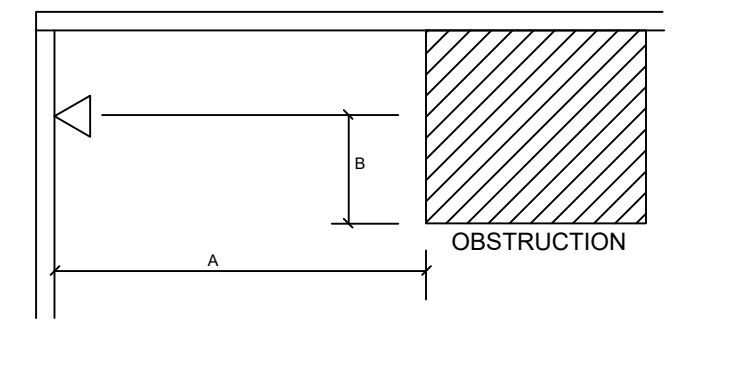


NPFA 13 2013 - FIGURE 8.6.5.1.2(c)



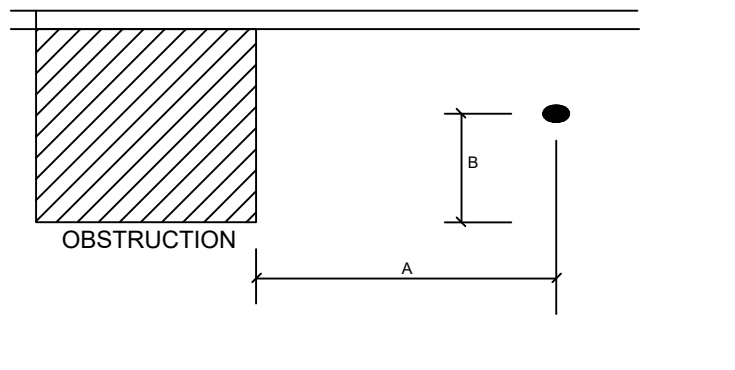
NPFA 13 2013 - TABLE 8.7.5.1.3

DISTANCE FROM SIDEWALL SPRINKLERS TO SIDE OF OBSTRUCTION (A)	MAXIMUM ALLOWABLE DISTANCE OF DEFLECTOR ABOVE BOTTOM OF OBSTRUCTION (IN.) (B)
Less than 4ft	Not Allowed
4ft to less than 5 ft.	1
5ft to less than 5 ft. 6 in.	2
5ft. 6 in. to less than 6 ft.	3
6ft to less than 6 ft. 6 in.	4
6ft. 6 in. to less than 7 ft.	6
7ft to less than 7 ft. 6 in.	7
7ft. 6 in. to less than 8 ft.	9
8ft to less than 8 ft. 6 in.	11
8ft. 6 in. or greater	14



NPFA 13 2013 - TABLE 8.7.5.1.4

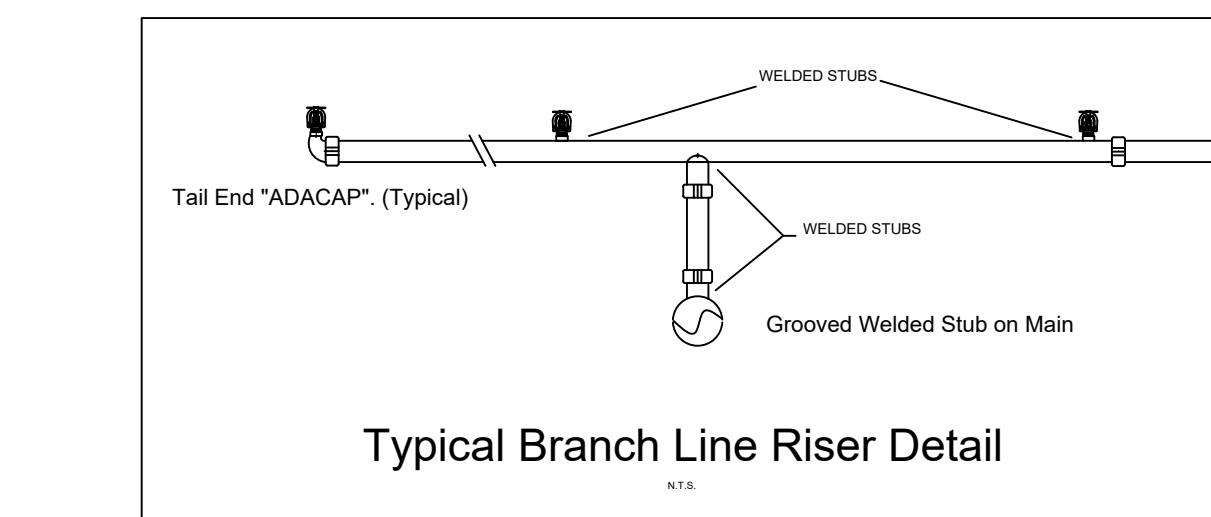
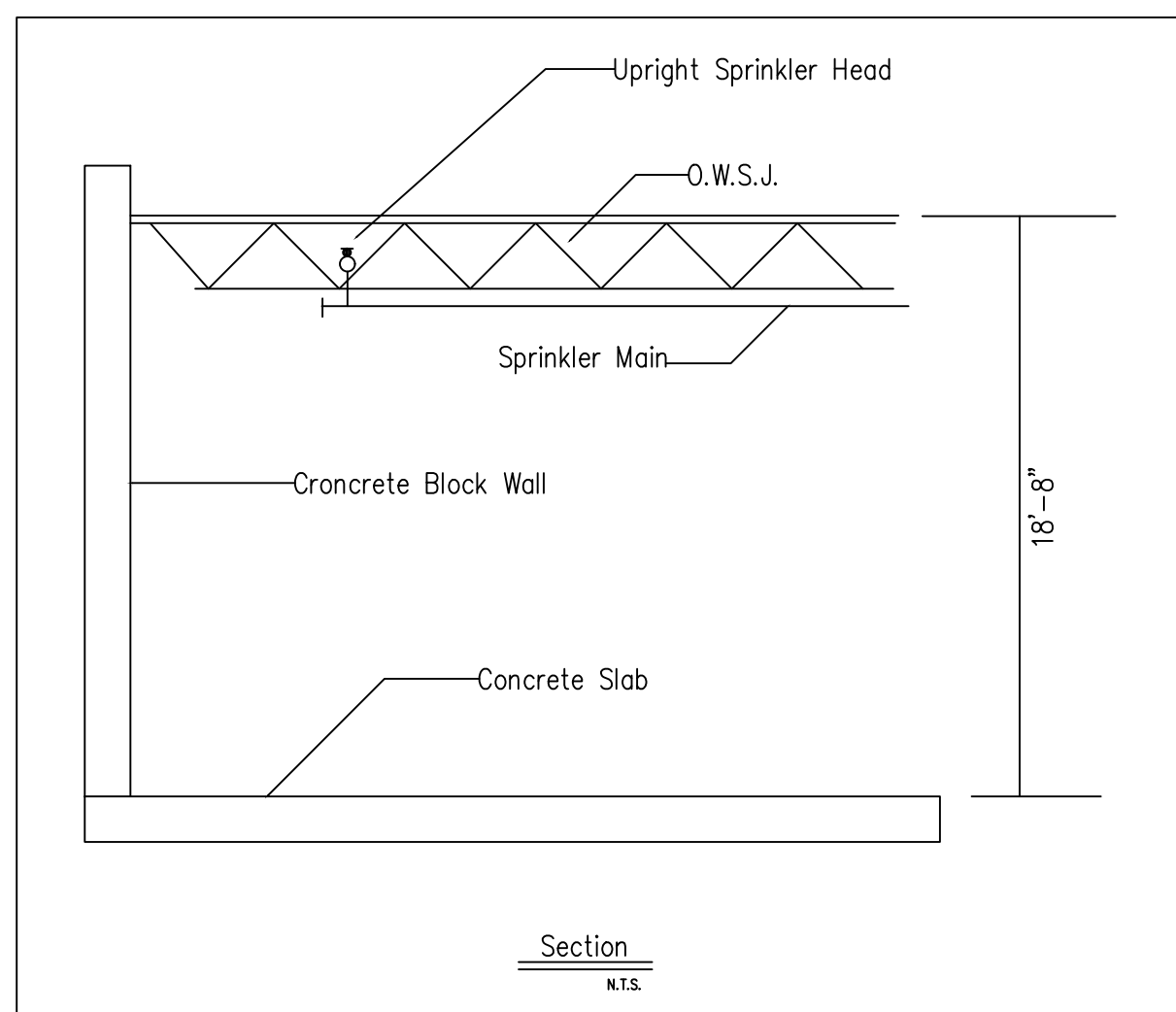
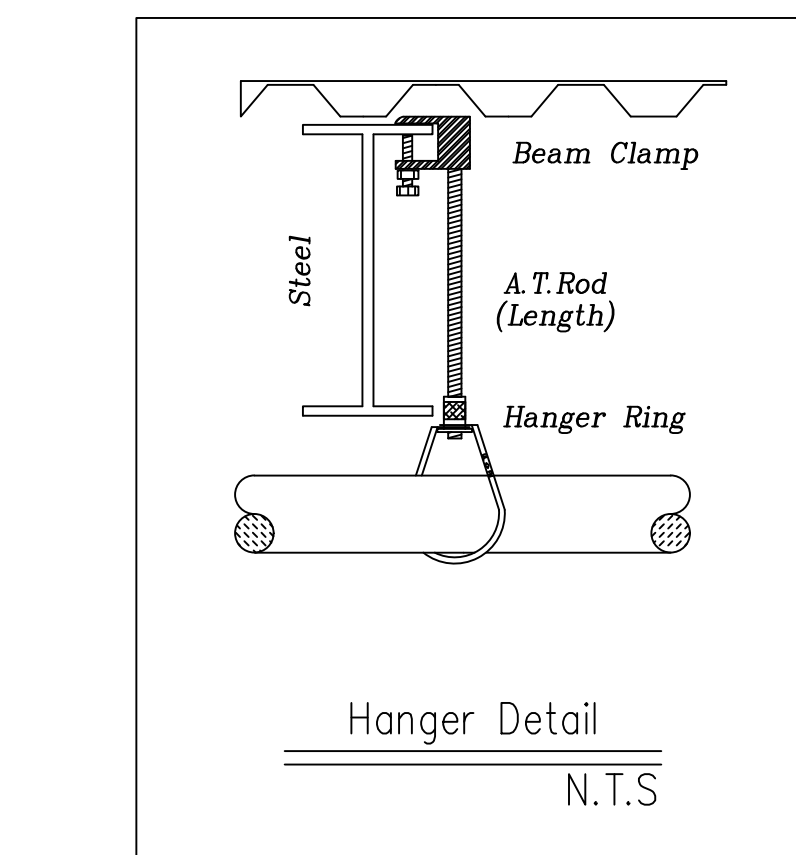
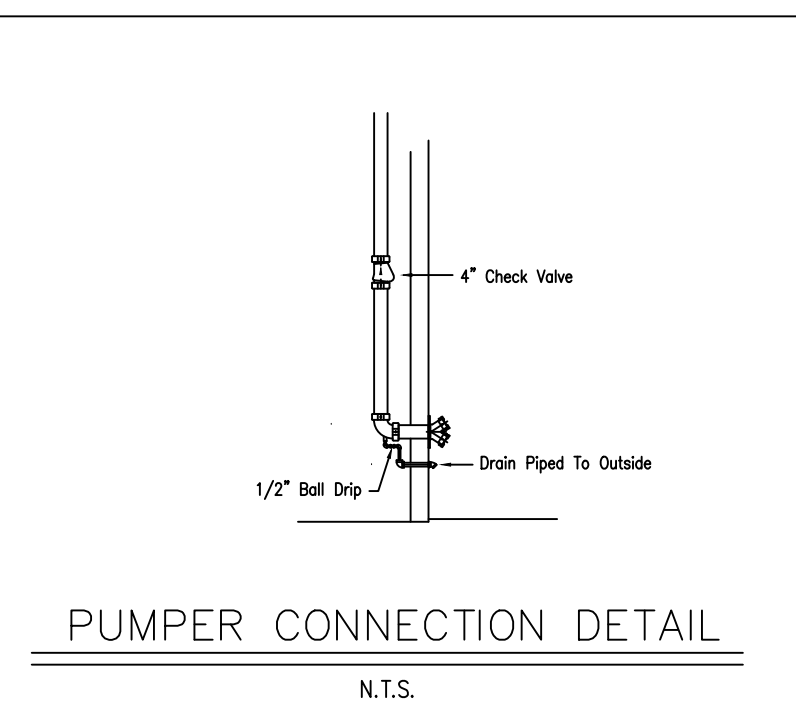
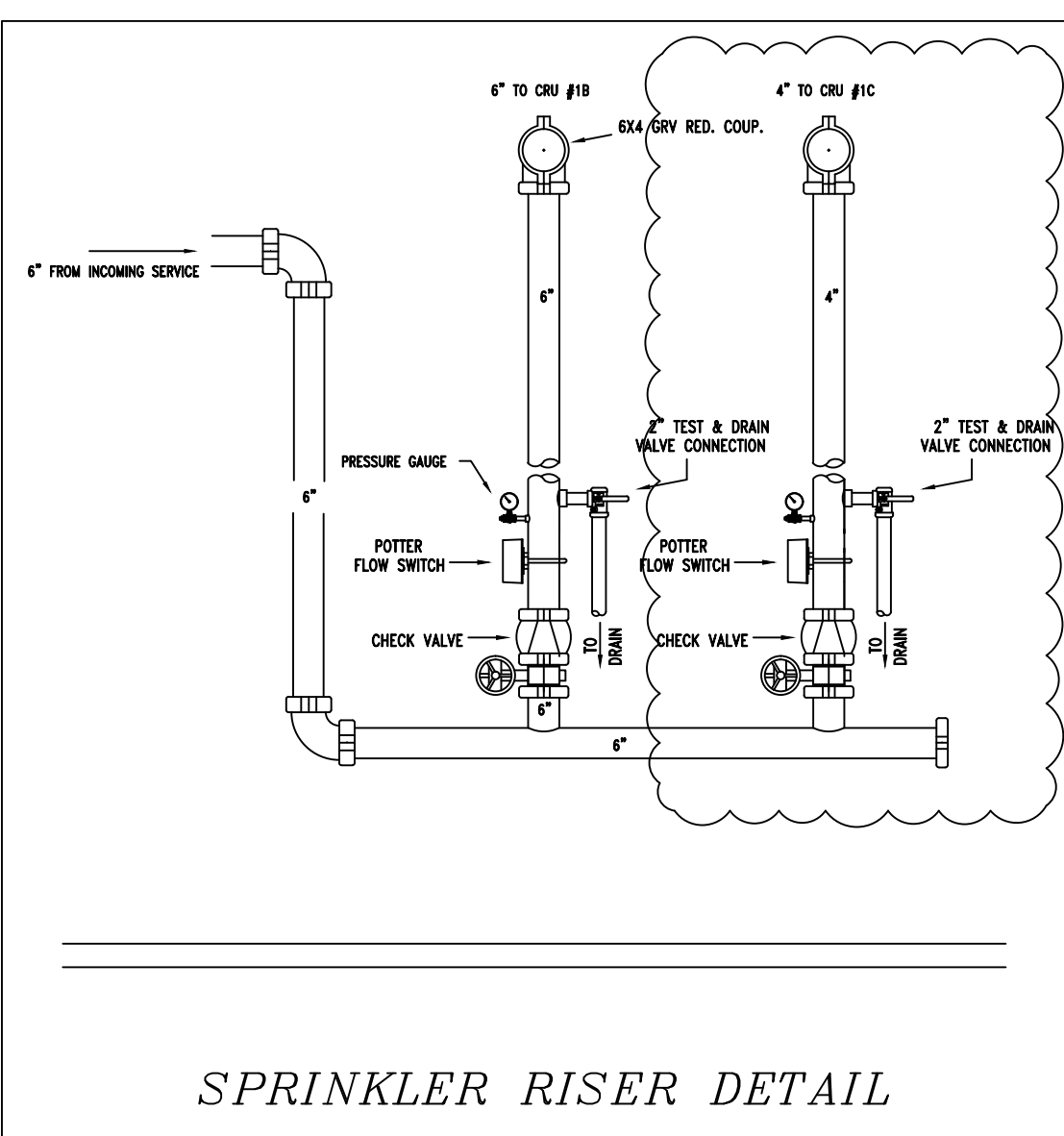
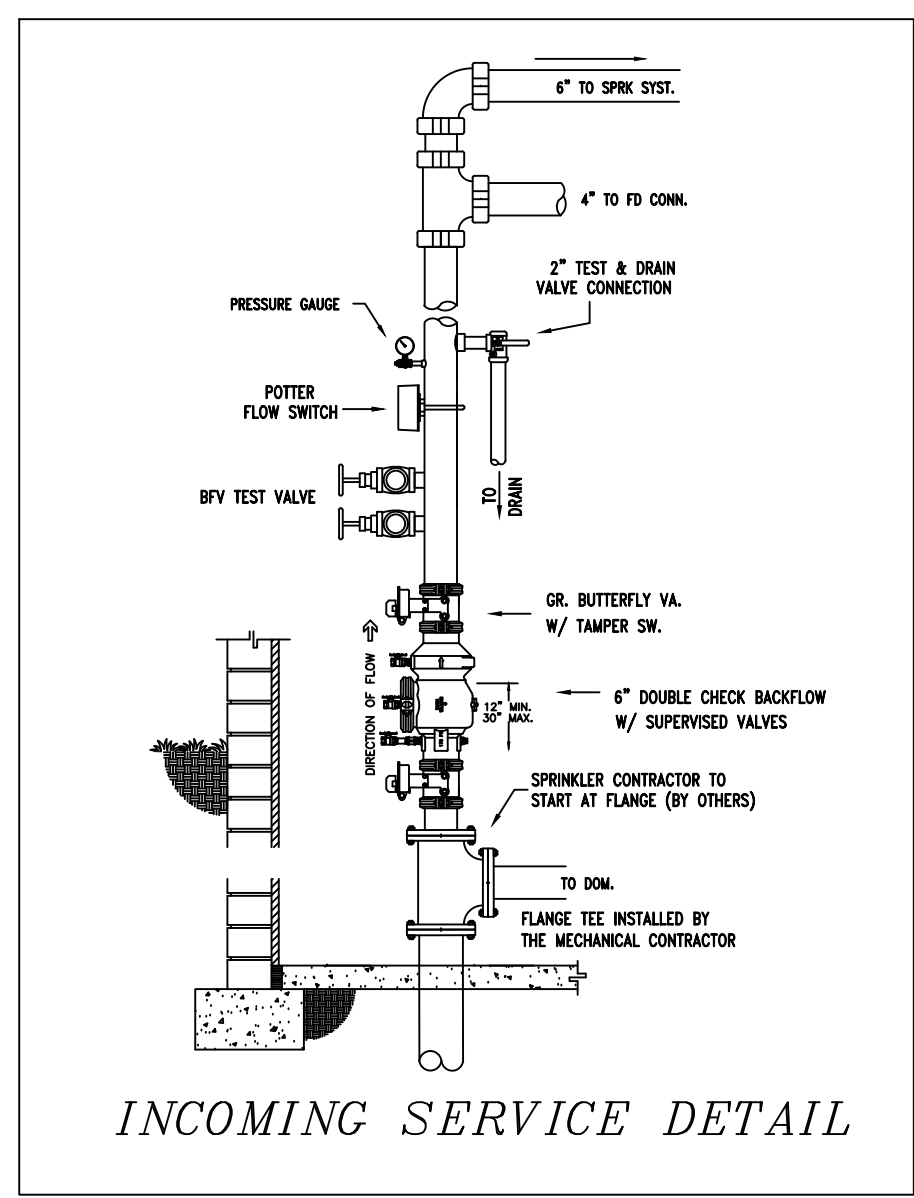
DISTANCE FROM SIDEWALL SPRINKLERS TO SIDE OF OBSTRUCTION (A)	MAXIMUM ALLOWABLE DISTANCE OF DEFLECTOR ABOVE BOTTOM OF OBSTRUCTION (IN.) (B)
4 in. to less than 6 in.	1
6in. to less than 1 ft.	2
1ft to less than 1 ft. 6 in.	3
1 ft. 6 in. to less than 2 ft.	5
2 ft to less than 2 ft. 6 in.	7
2 ft. 6 in. to less than 3 ft.	9
3 ft to less than 3 ft. 6 in.	11
3ft. 6 in. to less than 4 ft.	14
4ft. 6 in. to less than 5 ft.	
5ft to less than 5 ft. 6 in.	
5ft. 6 in. to less than 6 ft.	
6ft to less than 6 ft. 6 in.	
6ft. 6 in. to less than 7 ft.	
7ft to less than 7 ft. 6 in.	



NOTES TO THE OWNER / OCCUPANTS:
 1- OWNER/OCCUPANT IS RESPONSIBLE FOR SUPPLYING & MAINTAINING ADEQUATE HEAT (4°C, 40°F) TO ALL AREAS WHERE WET SPRINKLER PIPE IS INSTALLED IN ORDER TO PREVENT THE WET SPRINKLER PIPE FROM FREEZING.

INSTALL HIGH TEMPERATURE SPRINKLERS AROUND ALL UNIT HEATERS COORDINATE FINAL LOCATIONS ON SITE PRIOR TO INSTALLATION

SPRINKLERS ARE TO BE INSTALLED UNDER ALL OBSTRUCTIONS AS PER NPFA 2013, TABLE 8.12.5.1.1 AND FIGURE 8.12.5.1.1, AND COMPLIES WITH 8.12.5.2(2)



DWG NOTES:

- FIRE PROTECTION TO BE PROVIDED VIA NEW WET SPRINKLER SYSTEM TO BE DESIGNED IN ACCORDANCE WITH NPFA 13, 2013 AND THE OBC 2012 GUIDELINES AND RECOMMENDATIONS.
- IF APPLICABLE, COMMISSIONING OF INTEGRATED TESTING OF FIRE PROTECTION AND LIFE SAFETY SYSTEM TO BE COMPLETED BY OTHERS
- SHOP DRAWINGS TO BE SUBMITTED TO OWNERS INSURANCE COMPANY.
- MATERIALS TO BE ULC LISTED AND MEET NPFA 13, 2013 REQUIREMENTS
- COORDINATE SPRINKLER PIPE WITH EXISTING SITE CONDITIONS PRIOR TO INSTALLATION
- ALL PIPING SHALL BE BLACK STEEL PIPE C/W WELDED RISER OUTLETS OR MECHANICAL TEE JOINTS
- SPRINKLER HEADS SHALL BE EQUAL TO TYPE LISTED IN SPRINKLER SYMBOL BOX

DESIGN CRITERIA:

- INSTALLATION OF AUTOMATIC SPRINKLERS TO MEET THE REQUIREMENTS FOR ORDINARY GROUP 2, MAXIMUM HEAD SPACING OF 130SQ.FT.

NOTES:

- The Building's occupancy are COMMERCIAL RETAIL COMPLEX, (Ordinary Hazard Group II)
- Sprinkler Protection is via WET PIPE SYSTEMS, with standard and quick response sprinklers, hydraulically calculated as shown herein.
- Sprinkler Design Criteria: Proposed Retail Area – Design density 0.20 usgpm/FT² over 1500 ft² + 250 gpm total hose allowance.
- Construction Classification:
 - unobstructed construction as per NFPA 13, 2013
 - Deflector of sprinklers to be a minimum of 25 mm (1") to a maximum of 300 mm (12") below deck.
- System design is to NFPA 13, 2013, the Ontario Building Code guidelines and recommendations.
- Water supply: Static : 68 PSI
Residual: 64 PSI
Flow: 1840 usgpm

NOTE: SPRINKLER CONTRACTOR TO COMPLETE HYDRANT FLOW TESTING AS PER NFPA 291, 2013 EDITION, CHAPTER 4, FIG. 4.3.4 AT LEAST ONE RESIDUAL HYDRANT AND ONE FLOW HYDRANT MUST BE USED, PITOT AND RESIDUAL PRESSURE FROM BOTH SINGLE AND TWO PORTS FLOWING.

Sprinklers: As Noted in Sprinkler Symbol Box.

a.) Spare sprinkler head cabinet to be provided as per NFPA 13, 2013

Material:

- Alarm Valves: Flow Detection switch.
- Fire Department Connection: Standard red 4x2-1/2x2-1/2 c/w break away caps.
- Piping: 1-1/2" to 6" Schedule 10 roll grooved, black, ULC, FM Approved
1" Schedule 40, threaded, black, ULC, FM Approved.
- Fittings: 1-1/2" to 6" – Grooved Fittings & Couplings
1" cast iron fittings, black, threaded
- Welded: Outlet off mains and branch lines are welded in accordance with AWS B 2.1 Standards.
- Hangers: Beam Clamps off O.W.S.J.
Finish on rod – black
Rings – adjustable swivel loop type
Pipe hanger shall be installed as required by NFPA for supporting sprinkler piping. No other piping and/or devices are to be attached to the sprinkler pipe hanger system unless the hanger has been specially designed for the additional loading.

THIS CONTRACT DOES NOT INCLUDE ANY MATERIAL OR DEVICES TO IMPROVE THE STRUCTURAL STRENGTH OF THE BUILDING TO ENABLE IT TO CARRY THE LOAD OF THE FIRE PROTECTION SYSTEM.

GENERAL NOTES:

- All materials and installation to conform to the Ontario Building Code, applicable NFPA Standards, and local Fire Department.
- All dimensions shown on drawings are center dimensions unless otherwise specified.
- All piping locations to be verified upon a site visit prior to any fabrication and installation.
- Coordinate between sprinkler piping and other trades.
- Sprinkler protection must be provided under all fixed obstructions over 4'-0" wide (ducts, bulkheads, overhead doors, etc.) as per NFPA 13, 2013.
- Adequate heat must be provided by the owner or occupant in all areas where wet sprinkler piping is installed.
- Yard Fire Hydrant and incoming water service to flange above finish floor by others.

All drawings and specifications is an instrument of service and remain the exclusive property of Sprinkler Design Consulting and are protected under the Copyright Act. They may not be reproduced, distributed, altered or submitted for approvals without written permission of the Designer.

REV.	DATE	DESCRIPTION
01	APR 7 2024	ISSUED FOR PERMIT

REGISTERED PROFESSIONAL ENGINEER
 APR 7 2024
 G. N. CATT
 PROVINCE OF ONTARIO

S/D/C
SPRINKLER DESIGN CONSULTING
 23 TURNBULL DRIVE
 BRANTFORD, ONTARIO
 N3T 0K4
 PHONE: 226-388-1503
 EMAIL: jhayhurst@hotmail.ca

DRAWN BY: J.H.	CHECKED BY: G.C.
----------------	------------------

PROJECT #: 063-040624

PROJECT:
 WESTDELL DEVELOPMENT CORP
 COMMERCIAL BUILDING 1-CRU 1C
 1300 FANSHAWE PARK ROAD EAST
 LONDON, ONTARIO

SCALE: 1/8" = 1'-0"	DWG #: FP - 1
DATE: APRIL 7, 2024	