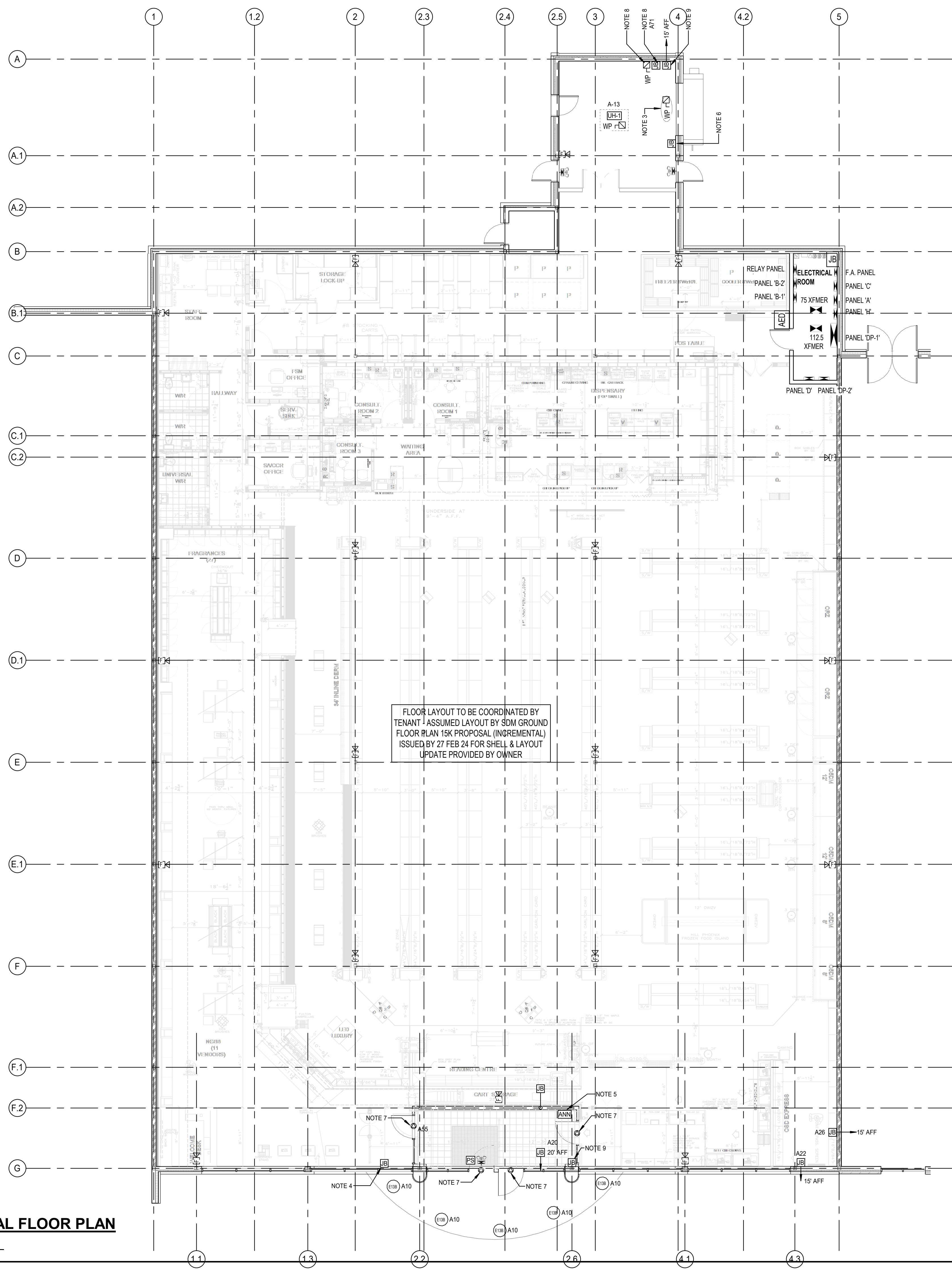


LEGEND OF ELECTRICAL SYMBOLS							
LIGHTING		MECHANICAL		COMMUNICATION SYSTEMS		FIRE ALARM	
	RECESSED LED/INDANDESCENT/COMPACT FLUORESCENT LUMINAIRE		MOTOR		VOICE OUTLET		SMOKE ALARM
	SURFACE LED/INDANDESCENT/COMPACT FLUORESCENT LUMINAIRE		THREE-PHASE MOTOR		DATA OUTLET		SMOKE ALARM/COMBINATION SMOKE/VOICE ALARM
	WALL LED/INDANDESCENT/COMPACT FLUORESCENT LUMINAIRE		MOTOR C/W DISCONNECT SWITCH		COMBINATION VOICE/DATA OUTLET		SMOKE DETECTOR
	LED/INDANDESCENT/COMPACT FLUORESCENT WALL WASHER		MOTOR C/W MANUAL STARTER		TELEVISION OUTLET		SMOKE DETECTOR IN CEILING PLENUM
	RECESSED LED/INDANDESCENT/COMPACT FLUORESCENT LUMINAIRE ON EMERGENCY POWER		UNFUSED DISCONNECT SWITCH		COMBINATION VOICE/TELEVISION OUTLET		SMOKE DETECTOR IN UNDER FLOOR
	SURFACE LED/INDANDESCENT/COMPACT FLUORESCENT LUMINAIRE ON EMERGENCY POWER		FUSED DISCONNECT SWITCH		FLOOR MOUNTED VOICE OUTLET		RATE OF RISE HEAT DETECTOR
	WALL LED/INDANDESCENT/COMPACT FLUORESCENT LUMINAIRE ON EMERGENCY POWER		COMBINATION MAGNETIC STARTER/DISCONNECT SWITCH		FLOOR MOUNTED DATA OUTLET		FIXED HIGH TEMPERATURE 200°C HEAT DETECTOR (80°C)
	RECESSED FLUORESCENT LUMINAIRE		MAGNETIC STARTER		FLOOR MOUNTED COMBINATION VOICE/DATA OUTLET		FIXED HIGH TEMPERATURE 130°C HEAT DETECTOR (80°C)
	SURFACE FLUORESCENT LUMINAIRE		FAN SPEED CONTROLLER		CEILING MOUNTED DATA OUTLET		DUCT SMOKE DETECTOR - SA DENOTES SUPPLY AIR, TA DENOTES RETURN AIR
	WALL FLUORESCENT LUMINAIRE		THERMOSTAT		CEILING MOUNTED TELEVISION OUTLET		FIRE ALARM PULL STATION
	WALL FLUORESCENT LUMINAIRE ON EMERGENCY POWER		SENSOR		MICROPHONE OUTLET		SPRINKLER FLOW SWITCH
	FLOOR MOUNTED FLUORESCENT LUMINAIRE		MOTOR IDENTIFICATION TAG (REFER TO MECHANICAL SCHEDULES)		PA SPEAKER - CEILING MOUNTED		SPRINKLER TAMPER SWITCH
	RECESSED FLUORESCENT LUMINAIRE ON EMERGENCY POWER		BASEBOARD HEATER		PA SPEAKER - WALL MOUNTED		SPRINKLER PRESSURE SWITCH
	SURFACE FLUORESCENT LUMINAIRE ON EMERGENCY POWER		POWER		VOLUME CONTROLLER		EMERGENCY ALARM PULL STATION
	TRACK LIGHTING C/W LIGHTING HEADS AS SHOWN		SINGLE SPECIAL PURPOSE RECEPTACLE		CHIME		SPRINKLER SUPERVISED VALVE
	POLE MOUNTED LUMINAIRE		DUPLEX RECEPTACLE		CLOCK - CEILING MOUNTED		END OF LINE RESISTOR
	LIGHTING BOLLARD		ISOLATED GROUND RECEPTACLE		CLOCK - WALL MOUNTED		FIRE ALARM BELL
	LIGHTING LUMINAIRE TYPE TAG		GROUND FAULT RECEPTACLE		FIRE ALARM COMBINATION BELL AND STROBE		FIRE ALARM HORN
	EXIT LIGHT - CEILING (C/W ARROWS AS INDICATED)		FOURPLEX RECEPTACLE		FIRE ALARM COMBINATION HORN AND STROBE		FIRE ALARM COMBINATION HORN WITH SILENCE BUTTON
	EXIT LIGHT - WALL (C/W ARROWS AS INDICATED)		ISOLATED GROUND FOURPLEX RECEPTACLE		FIRE ALARM HORN WITH SILENCE BUTTON		FIRE ALARM STROBE WITH SILENCE BUTTON
	EMERGENCY POWER BATTERY PACK		COMPUTER DUPLEX RECEPTACLE (FED W/ DEDICATED NEUTRAL)		FIRE ALARM STROBE		FIRE ALARM SPEAKER - CEILING MOUNTED
	EMERGENCY POWER BATTERY PACK C/W LIGHTING HEADS		COMPUTER DUPLEX RECEPTACLE (FED W/ DEDICATED NEUTRAL)		FIRE ALARM SPEAKER - CEILING MOUNTED		FIRE ALARM SPEAKER - CEILING MOUNTED
	EMERGENCY POWER BATTERY PACK C/W R HEADS & EXIT LIGHT		SECURITY SYSTEMS		FIRE ALARM SPEAKER - CEILING MOUNTED		FIRE ALARM SPEAKER - CEILING MOUNTED
	SINGLE REMOTE EMERGENCY LIGHTING HEAD - CEILING MOUNT		FLOOR MOUNTED RECEPTACLE		FIRE ALARM SPEAKER - CEILING MOUNTED		FIRE ALARM SPEAKER - CEILING MOUNTED
	DOUBLE REMOTE EMERGENCY LIGHTING HEAD - CEILING MOUNT		FLOOR MOUNTED ISOLATED GROUND RECEPTACLE		FIRE ALARM SPEAKER - CEILING MOUNTED		FIRE ALARM SPEAKER - CEILING MOUNTED
	SINGLE REMOTE EMERGENCY LIGHTING HEAD - WALL MOUNT		FLOOR MOUNTED FOURPLEX ISOLATED GROUND RECEPTACLE		FIRE ALARM SPEAKER - CEILING MOUNTED		FIRE ALARM SPEAKER - CEILING MOUNTED
	DOUBLE REMOTE EMERGENCY LIGHTING HEAD - WALL MOUNT		FLOOR MOUNTED FOURPLEX ISOLATED GROUND RECEPTACLE		FIRE ALARM SPEAKER - CEILING MOUNTED		FIRE ALARM SPEAKER - CEILING MOUNTED
	SWITCH - SINGLE, TWO, AND THREE GANG		CEILING MOUNTED SINGLE SPECIAL PURPOSE RECEPTACLE		FIRE ALARM SPEAKER - CEILING MOUNTED		FIRE ALARM SPEAKER - CEILING MOUNTED
	2 POLE SWITCH		CEILING MOUNTED DUPLEX RECEPTACLE		FIRE ALARM SPEAKER - CEILING MOUNTED		FIRE ALARM SPEAKER - CEILING MOUNTED
	SWITCH - 3 WAY		CEILING MOUNTED JUNCTION BOX		FIRE ALARM SPEAKER - CEILING MOUNTED		FIRE ALARM SPEAKER - CEILING MOUNTED
	SWITCH - LOW VOLTAGE		FLOOR MOUNTED JUNCTION BOX		FIRE ALARM SPEAKER - CEILING MOUNTED		FIRE ALARM SPEAKER - CEILING MOUNTED
	SWITCH - KEY SWITCH		WALL MOUNTED JUNCTION BOX		FIRE ALARM SPEAKER - CEILING MOUNTED		FIRE ALARM SPEAKER - CEILING MOUNTED
	SWITCH - MANUAL STARTER		ELECTRICAL PANELBOARD - SURFACE MOUNTED		FIRE ALARM SPEAKER - CEILING MOUNTED		FIRE ALARM SPEAKER - CEILING MOUNTED
	SWITCH - DIMMER SWITCH		ELECTRICAL PANELBOARD - RECESSED		FIRE ALARM SPEAKER - CEILING MOUNTED		FIRE ALARM SPEAKER - CEILING MOUNTED
	SWITCH - OCCUPANCY SENSOR SWITCH		CONTACTOR		FIRE ALARM SPEAKER - CEILING MOUNTED		FIRE ALARM SPEAKER - CEILING MOUNTED
	SWITCH C/W PILOT LIGHT - SINGLE GANG		CAR PLUG POST		FIRE ALARM SPEAKER - CEILING MOUNTED		FIRE ALARM SPEAKER - CEILING MOUNTED
	SWITCH - TIMER SWITCH		TIME CLOCK		FIRE ALARM SPEAKER - CEILING MOUNTED		FIRE ALARM SPEAKER - CEILING MOUNTED
	PHOTO ELECTRIC CELL		SINGLE PHASE DIRECT CONNECTION		FIRE ALARM SPEAKER - CEILING MOUNTED		FIRE ALARM SPEAKER - CEILING MOUNTED
	OCCUPANCY SENSOR - CEILING MOUNTED		THREE PHASE DIRECT CONNECTION		FIRE ALARM SPEAKER - CEILING MOUNTED		FIRE ALARM SPEAKER - CEILING MOUNTED
	DAYLIGHT HARVESTING LIGHT SENSOR		DROP CORD		FIRE ALARM SPEAKER - CEILING MOUNTED		FIRE ALARM SPEAKER - CEILING MOUNTED
	ON/OFF ROOM CONTROLLER				FIRE ALARM SPEAKER - CEILING MOUNTED		FIRE ALARM SPEAKER - CEILING MOUNTED
	6-10V DIMMING CONTROLLER				FIRE ALARM SPEAKER - CEILING MOUNTED		FIRE ALARM SPEAKER - CEILING MOUNTED
	LIGHTING CONTROL POWER PACK				FIRE ALARM SPEAKER - CEILING MOUNTED		FIRE ALARM SPEAKER - CEILING MOUNTED

ELECTRICAL ABBREVIATIONS LIST						
IP	IP (POLE) 3P, 4P, ETC.	HT	HEIGHT	DM	DM (L)	DM (L) SPECIFICATION
A	AMPERE	HRV	HEAT RECOVERY VENTILATION	DM	DM (S)	DM (S) SPECIFICATION
AC	ACROSS	HTR	HEATING	DM	DM (T)	DM (T) SPECIFICATION
ACG	ACROSS CEILING	HTR	HEATER	DM	DM (B)	DM (B) SPECIFICATION
AD	AUTOMATIC DOOR OPERATOR	HTR	HEATING, VENTILATING AND AIR CONDITIONING	DM	DM (R)	DM (R) SPECIFICATION
AF	AIR FLOW	HTR	HEATING, VENTILATING AND AIR CONDITIONING	DM	DM (S)	DM (S) SPECIFICATION
AK	AIR HANDLING UNIT	HTR	HEATING, VENTILATING AND AIR CONDITIONING	DM	DM (T)	DM (T) SPECIFICATION
AL	ALUMINUM	HTR	HEATING, VENTILATING AND AIR CONDITIONING	DM	DM (B)	DM (B) SPECIFICATION
ALT	ALTERNATE	HTR	HEATING, VENTILATING AND AIR CONDITIONING	DM	DM (R)	DM (R) SPECIFICATION
AMP	AMPERE	HTR	HEATING, VENTILATING AND AIR CONDITIONING	DM	DM (S)	DM (S) SPECIFICATION
AMP	AMPERE	HTR	HEATING, VENTILATING AND AIR CONDITIONING	DM	DM (T)	DM (T) SPECIFICATION
AMP	AMPERE	HTR	HEATING, VENTILATING AND AIR CONDITIONING	DM	DM (B)	DM (B) SPECIFICATION
AMP	AMPERE	HTR	HEATING, VENTILATING AND AIR CONDITIONING	DM	DM (R)	DM (R) SPECIFICATION
AMP	AMPERE	HTR	HEATING, VENTILATING AND AIR CONDITIONING	DM	DM (S)	DM (S) SPECIFICATION
AMP	AMPERE	HTR	HEATING, VENTILATING AND AIR CONDITIONING	DM	DM (T)	DM (T) SPECIFICATION
AMP	AMPERE	HTR	HEATING, VENTILATING AND AIR CONDITIONING	DM	DM (B)	DM (B) SPECIFICATION
AMP	AMPERE	HTR	HEATING, VENTILATING AND AIR CONDITIONING	DM	DM (R)	DM (R) SPECIFICATION
AMP	AMPERE	HTR	HEATING, VENTILATING AND AIR CONDITIONING	DM	DM (S)	DM (S) SPECIFICATION
AMP	AMPERE	HTR	HEATING, VENTILATING AND AIR CONDITIONING	DM	DM (T)	DM (T) SPECIFICATION
AMP	AMPERE	HTR	HEATING, VENTILATING AND AIR CONDITIONING	DM	DM (B)	DM (B) SPECIFICATION
AMP	AMPERE	HTR	HEATING, VENTILATING AND AIR CONDITIONING	DM	DM (R)	DM (R) SPECIFICATION
AMP	AMPERE	HTR	HEATING, VENTILATING AND AIR CONDITIONING	DM	DM (S)	DM (S) SPECIFICATION
AMP	AMPERE	HTR	HEATING, VENTILATING AND AIR CONDITIONING	DM	DM (T)	DM (T) SPECIFICATION
AMP	AMPERE	HTR	HEATING, VENTILATING AND AIR CONDITIONING	DM	DM (B)	DM (B) SPECIFICATION
AMP	AMPERE	HTR	HEATING, VENTILATING AND AIR CONDITIONING	DM	DM (R)	DM (R) SPECIFICATION
AMP	AMPERE	HTR	HEATING, VENTILATING AND AIR CONDITIONING	DM	DM (S)	DM (S) SPECIFICATION
AMP	AMPERE	HTR	HEATING, VENTILATING AND AIR CONDITIONING	DM	DM (T)	DM (T) SPECIFICATION
AMP	AMPERE	HTR	HEATING, VENTILATING AND AIR CONDITIONING	DM	DM (B)	DM (B) SPECIFICATION
AMP	AMPERE	HTR	HEATING, VENTILATING AND AIR CONDITIONING	DM	DM (R)	DM (R) SPECIFICATION
AMP	AMPERE	HTR	HEATING, VENTILATING AND AIR CONDITIONING	DM	DM (S)	DM (S) SPECIFICATION
AMP	AMPERE	HTR	HEATING, VENTILATING AND AIR CONDITIONING	DM	DM (T)	DM (T) SPECIFICATION
AMP	AMPERE	HTR	HEATING, VENTILATING AND AIR CONDITIONING	DM	DM (B)	DM (B) SPECIFICATION
AMP	AMPERE	HTR	HEATING, VENTILATING AND AIR CONDITIONING	DM	DM (R)	DM (R) SPECIFICATION
AMP	AMPERE	HTR	HEATING, VENTILATING AND AIR CONDITIONING	DM	DM (S)	DM (S) SPECIFICATION
AMP	AMPERE	HTR	HEATING, VENTILATING AND AIR CONDITIONING	DM	DM (T)	DM (T) SPECIFICATION
AMP	AMPERE	HTR	HEATING, VENTILATING AND AIR CONDITIONING	DM	DM (B)	DM (B) SPECIFICATION
AMP	AMPERE	HTR	HEATING, VENTILATING AND AIR CONDITIONING	DM	DM (R)	DM (R) SPECIFICATION
AMP	AMPERE	HTR	HEATING, VENTILATING AND AIR CONDITIONING	DM	DM (S)	DM (S) SPECIFICATION
AMP	AMPERE	HTR	HEATING, VENTILATING AND AIR CONDITIONING	DM	DM (T)	DM (T) SPECIFICATION
AMP	AMPERE	HTR	HEATING, VENTILATING AND AIR CONDITIONING	DM	DM (B)	DM (B) SPECIFICATION
AMP	AMPERE	HTR	HEATING, VENTILATING AND AIR CONDITIONING	DM	DM (R)	DM (R) SPECIFICATION
AMP	AMPERE	HTR	HEATING, VENTILATING AND AIR CONDITIONING	DM	DM (S)	DM (S) SPECIFICATION
AMP	AMPERE	HTR	HEATING, VENTILATING AND AIR CONDITIONING	DM	DM (T)	DM (T) SPECIFICATION
AMP	AMPERE	HTR	HEATING, VENTILATING AND AIR CONDITIONING	DM	DM (B)	DM (B) SPECIFICATION
AMP	AMPERE	HTR	HEATING, VENTILATING AND AIR CONDITIONING	DM	DM (R)	DM (R) SPECIFICATION
AMP	AMPERE	HTR	HEATING, VENTILATING AND AIR CONDITIONING	DM	DM (S)	DM (S) SPECIFICATION
AMP	AMPERE	HTR	HEATING, VENTILATING AND AIR CONDITIONING	DM	DM (T)	DM (T) SPECIFICATION
AMP	AMPERE	HTR	HEATING, VENTILATING AND AIR CONDITIONING	DM	DM (B)	DM (B) SPECIFICATION
AMP	AMPERE	HTR	HEATING, VENTILATING AND AIR CONDITIONING	DM	DM (R)	DM (R) SPECIFICATION
AMP	AMPERE	HTR	HEATING, VENTILATING AND AIR CONDITIONING	DM	DM (S)	DM (S) SPECIFICATION
AMP	AMPERE	HTR	HEATING, VENTILATING AND AIR CONDITIONING	DM	DM (T)	DM (T) SPECIFICATION
AMP	AMPERE	HTR	HEATING, VENTILATING AND AIR CONDITIONING	DM	DM (B)	DM (B) SPECIFICATION
AMP	AMPERE	HTR	HEATING, VENTILATING AND AIR CONDITIONING	DM	DM (R)	DM (R) SPECIFICATION
AMP	AMPERE	HTR	HEATING, VENTILATING AND AIR CONDITIONING	DM	DM (S)	DM (S) SPECIFICATION
AMP	AMPERE	HTR	HEATING, VENTILATING AND AIR CONDITIONING	DM	DM (T)	DM (T) SPECIFICATION
AMP	AMPERE	HTR	HEATING, VENTILATING AND AIR CONDITIONING	DM	DM (B)	DM (B) SPECIFICATION
AMP	AMPERE	HTR	HEATING, VENTILATING AND AIR CONDITIONING	DM	DM (R)	DM (R) SPECIFICATION
AMP	AMPERE	HTR	HEATING, VENTILATING AND AIR CONDITIONING	DM	DM (S)	DM (S) SPECIFICATION
AMP	AMPERE	HTR	HEATING, VENTILATING AND AIR CONDITIONING	DM	DM (T)	DM (T) SPECIFICATION
AMP	AMPERE	HTR	HEATING, VENTILATING AND AIR CONDITIONING	DM	DM (B)	DM (B) SPECIFICATION
AMP	AMPERE	HTR	HEATING, VENTILATING AND AIR CONDITIONING	DM	DM (R)	DM (R) SPECIFICATION
AMP	AMPERE	HTR	HEATING, VENTILATING AND AIR CONDITIONING	DM	DM (S)	DM (S) SPECIFICATION
AMP	AMPERE	HTR	HEATING, VENTILATING AND AIR CONDITIONING	DM	DM (T)	DM (T) SPECIFICATION
AMP	AMPERE	HTR	HEATING, VENTILATING AND AIR CONDITIONING	DM	DM (B)	DM (B) SPECIFICATION
AMP	AMPERE	HTR	HEATING, VENTILATING AND AIR CONDITIONING	DM	DM (R)	DM (R) SPECIFICATION
AMP	AMPERE	HTR	HEATING, VENTILATING AND AIR CONDITIONING	DM	DM (S)	DM (S) SPECIFICATION
AMP	AMPERE	HTR	HEATING, VENTILATING AND AIR CONDITIONING	DM	DM (T)	DM (T) SPECIFICATION
AMP	AMPERE	HTR	HEATING, VENTILATING AND AIR CONDITIONING	DM	DM (B)	DM (B) SPECIFICATION
AMP	AMPERE	HTR	HEATING, VENTILATING AND AIR CONDITIONING	DM	DM (R)	DM (R) SPECIFICATION
AMP	AMPERE	HTR	HEATING, VENTILATING AND AIR CONDITIONING	DM	DM (S)	DM (S) SPECIFICATION
AMP	AMPERE	HTR	HEATING, VENTILATING AND AIR CONDITIONING	DM	DM (T)	DM (T) SPECIFICATION
AMP	AMPERE	HTR	HEATING, VENTILATING AND AIR CONDITIONING	DM	DM (B)	DM (B) SPECIFICATION
AMP	AMPERE	HTR	HEATING, VENTILATING AND AIR CONDITIONING	DM	DM (R)	DM (R) SPECIFICATION
AMP	AMPERE	HTR	HEATING, VENTILATING AND AIR CONDITIONING	DM	DM (S)	DM (S) SPECIFICATION
AMP	AMPERE	HTR	HEATING, VENTILATING AND AIR CONDITIONING	DM	DM (T)	DM (T) SPECIFICATION
AMP	AMPERE	HTR	HEATING, VENTILATING AND AIR CONDITIONING	DM	DM (B)	DM (B) SPECIFICATION
AMP	AMPERE	HTR	HEATING, VENTILATING AND AIR CONDITIONING	DM	DM (R)	DM (R) SPECIFICATION
AMP	AMPERE	HTR	HEATING, VENTILATING AND AIR CONDITIONING	DM	DM (S)	DM (S) SPECIFICATION
AMP	AMPERE	HTR	HEATING, VENTILATING AND AIR CONDITIONING	DM	DM (T)	DM (T) SPECIFICATION
AMP	AMPERE	HTR	HEATING, VENTILATING AND AIR CONDITIONING	DM	DM (B)	DM (B) SPECIFICATION
AMP	AMPERE	HTR	HEATING, VENTILATING AND AIR CONDITIONING	DM	DM (R)	DM (R) SPECIFICATION
AMP	AMPERE	HTR	HEATING, VENTILATING AND AIR CONDITIONING	DM	DM (S)	DM (S) SPECIFICATION
AMP	AMPERE	HTR	HEATING, VENTILATING AND AIR CONDITIONING	DM	DM (T)	DM (T) SPECIFICATION
AMP	AMPERE	HTR	HEATING, VENTILATING AND AIR CONDITIONING	DM	DM (B)	DM (B) SPECIFICATION
AMP	AMPERE	HTR	HEATING, VENTILATING AND AIR CONDITIONING	DM	DM (R)	DM (R) SPECIFICATION
AMP	AMPERE	HTR	HEATING, VENTILATING AND AIR CONDITIONING	DM	DM (S)	DM (S) SPECIFICATION
AMP						



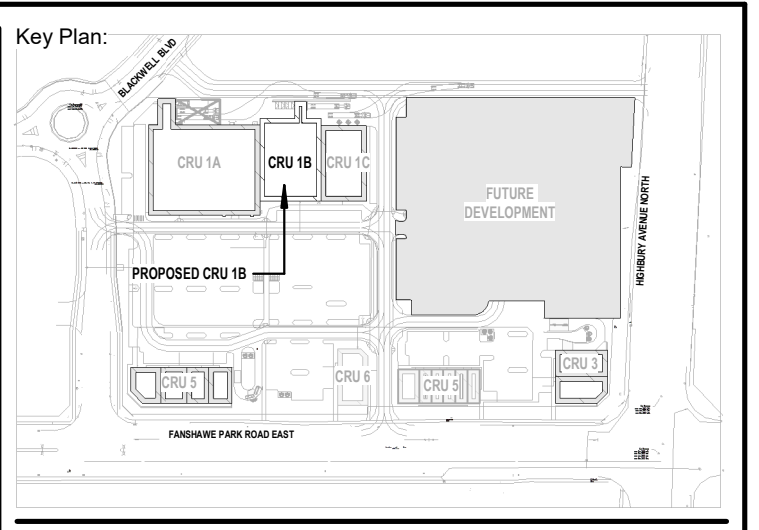
FLOOR LAYOUT TO BE COORDINATED BY TENANT. ASSUMED LAYOUT BY SDM GROUND FLOOR PLAN 15K PROPOSAL (INCREMENTAL) ISSUED BY 27 FEB 24 FOR SHELL & LAYOUT UPDATE PROVIDED BY OWNER

\* SHOPPERS DRUG MART LAYOUT INFORMATION TAKEN FROM PROPOSED FLOOR PLAN BY SHOPPERS DRUG MART DESIGN & CONSTRUCTION ONTARIO REGION DATED JAN 10, 2024. ISSEUD FOR FOP & STANDARDS UPDATE

- GENERAL NOTES:**
- A. COORDINATE LOCATION OF ALL IN FLOOR CONDUIT LOCATIONS WITH LATEST MERCHANDISING PLANS ISSUED BY S.D.M. PRIOR TO ROUGH IN.
  - B. ALL CONDUITS SHOWN BELOW FLOOR SLAB ARE TO BE SUPPLIED AND INSTALLED BY THIS CONTRACTOR AND ARE FOR FUTURE TENANT USE.
  - C. BASE BUILDING CONTRACTOR TO NOTE THAT THE SALES AREA CEILING CAVITY IS USED AS A RETURN AIR PLENUM. ALL WIRING IN THE RETURN CAVITY IS TO BE INSTALLED IN CONDUIT OR BE FT6 RATED. REMOVE JACKET FROM ANY FT4 TECK CABLING WHICH IS NOT PERMITTED BY CODE. ALL DISCIPLINES INCLUDING AND NOT LIMITED TO DATA COMMUNICATIONS, SECURITY, SOUND AND ELECTRICAL CONTRACTOR ARE TO ADHERE TO APPLICABLE CODES AND STANDARDS. MONITOR INSTALLATION OF CABLING IN THE RETURN AIR PLENUM CAVITY. CONTACT THE CONSULTANT IF ANY NON APPROVED CABLING IS INSTALLED.
  - D. ALL CONDUIT ON PERIMETER WALLS TO BE RECESSED IN WALL AND TERMINATED 12" ABOVE TENANT'S FINISHED CEILING HEIGHT.
- SLAB CONDUIT NOTES:**
- a. SUPPLY AND INSTALL ONE PULL STRING IN EACH CONDUIT.
  - b. RUN CONDUITS SURFACE MOUNT ON ALL. TERMINATE AT 15' AFF.
  - c. 2-24"x24" REFRIGERATION PIT BOXES BELOW SLAB SUPPLIED AND INSTALLED BY LANDLORD.
  - d. BASE BUILDING CONTRACTOR TO STUP CONDUIT AT 4' AFF FOR FUTURE EAM NETWORK CABLE.

- DRAWING NOTES:**
1. EXTERIOR LIGHTING, COORDINATE LOCATIONS WITH ARCHITECTURAL ELEVATIONS.
  2. ALL FIRE ALARM SIGNALING DEVICES SHALL NOT FACE THE FRONT OF THE STORE. MOUNT HORN ON BACK OF COLUMNS. CONFIRM EXACT MOUNTING HEIGHT ON SITE. VERIFICATION TO BE COMPLETED PER CURRENT ULC STANDARDS.
  3. 208V, 3PH CONNECTION FOR 1HP DOCK LEVELER CONTROLLER AND DOCK LEVELER
  4. JUNCTION BOX FOR CANOPY LIGHTING BY THIS CONTRACTOR.
  5. LOCATION OF REMOTE FIRE ALARM ANNUNCIATOR PANEL BY THIS CONTRACTOR. ANNUNCIATOR PANEL SHALL BE MIRCROM "RA-1000" SERIES' MODEL 'BB1001D'. PROVIDE ADEQUATE ZONES FOR FUTURE TENANT USE.
  6. 15A-120V CONNECTION FOR RECEIVING EXIT DOOR DEVICE (ARM-A-DOR SERIES A101-002). DOOR HARDWARE SUPPLIED AND INSTALLED BY G.C. AND ELECTRICAL CONNECTIONS ARE BY THIS CONTRACTOR.
  7. HARDWARE CONNECTION FOR DOOR OPERATORS AND MOTION SENSORS. ELECTRICAL CONTRACTOR TO PROVIDE ALL FINAL WIRING CONNECTIONS.
  8. 30A, 800V 3PH DISCONNECT SWITCH FOR GARBAGE COMPACTOR FROM MAIN DISTRIBUTION BOARD TO COMPACTOR CONTROLLER. PROVIDE AN ADDITIONAL 15A, 120V CONNECTION FOR CONTROLLER.
  9. PROVIDE A JUNCTION BOX FOR FUTURE EXTERIOR SECURITY CAMERA CW 1'C AND PULL STRING BACK TO DVR AT I.T. EQUIPMENT LOCATION. CONTRACTOR TO CONFIRM LOCATION, AMOUNT, ROUTING AND TERMINATION ON SITE WITH SECURITY VENDOR PRIOR TO ROUGH-IN FINAL LOCATIONS TO BE DETERMINED BY LOSS PREVENTION.

**ELECTRICAL FLOOR PLAN**  
SCALE: 1 : 100



Site Plan: North Arrow:



Seal: Seal:

**General Notes:**

IT IS THE RESPONSIBILITY OF THE OWNER, GENERAL AND/OR TENANT CONTRACTOR AND ALL SUB-TRADES TO BE FAMILIAR WITH THE PROJECT AS A WHOLE. ALL DISCREPANCIES AND DIMENSIONAL ERRORS ON THE PLANS AND RELATED DOCUMENTS MUST BE REPORTED TO CREATIVE STRUCTURES (CS) PRIOR TO COMMENCING ANY WORK.

DO NOT SCALE DRAWING. FOR CONSTRUCTION DRAWINGS MUST HAVE ORIGINAL CONSULTANT'S STAMP AND SIGNATURE. ALL CONSTRUCTION AND MATERIALS MUST CONFORM WITH APPLICABLE CODES AND C.M.H.C. STANDARDS AND BE APPROVED BY OWNER.

THE CONTENTS OF THIS DRAWING REMAIN THE COPYRIGHT PROPERTY OF CREATIVE STRUCTURES (CS) AND SHALL NOT BE COPIED OR REPRODUCED IN WHOLE OR IN PART WITHOUT WRITTEN CONSENT OF CREATIVE STRUCTURES.

THESE DRAWINGS AND ALL DETAILS ARE FOR THIS PROJECT ONLY AND SHOULD NOT BE USED FOR ANY OTHER WORK.

IT IS THE RESPONSIBILITY OF THE APPROPRIATE CONTRACTOR TO CHECK AND VERIFY ALL DIMENSIONS ON SITE AND REPORT ALL ERRORS AND/OR OMISSIONS TO CREATIVE STRUCTURES LTD. PRIOR TO COMMENCING WORK. ALL DIMENSIONS AND LEVELS ARE APPROXIMATE AND SHOULD BE CONFIRMED BY OWNER AND GENERAL CONTRACTOR PRIOR CONSTRUCTION.

ALL CONTRACTORS MUST COMPLY WITH ALL PERTINENT BUILDING CODE REGULATIONS AND BYLAW'S HAVING JURISDICTION.

THIS DRAWING MUST NOT BE USED FOR CONSTRUCTION UNTIL IT HAS BEEN ISSUED AND MARKED "ISSUED FOR CONSTRUCTION". THE DRAWINGS SHALL NOT BE USED FOR PRICING, COSTING, OR TENDER UNLESS INDICATED IN THE REVISION COLUMN AND THESE DRAWINGS ARE NOT COMPLETE AND ANY PRICES BASED ON THESE DRAWINGS MUST INCLUDE ALLOWANCES FOR THIS WITH NO LIABILITY ON CREATIVE STRUCTURES LTD.

CONSTRUCTION TO BE ACCORDING TO BEST COMMON PRACTICE.

CONTRACTOR IS FULLY RESPONSIBLE FOR MATTERS AFFECTING CONSTRUCTION.

ANY MATERIAL ALTERATIONS CARRIED OUT DURING CONSTRUCTION BY THE CONTRACTOR OR ASSOCIATED SUB-CONTRACTOR SHALL BE CONFIRMED WITH THE ENGINEER PRIOR TO INSTALL. FAILURE TO DO SO RESULTS IN FULL CONTRACTOR RESPONSIBILITY FOR SYSTEMS AFFECTED.

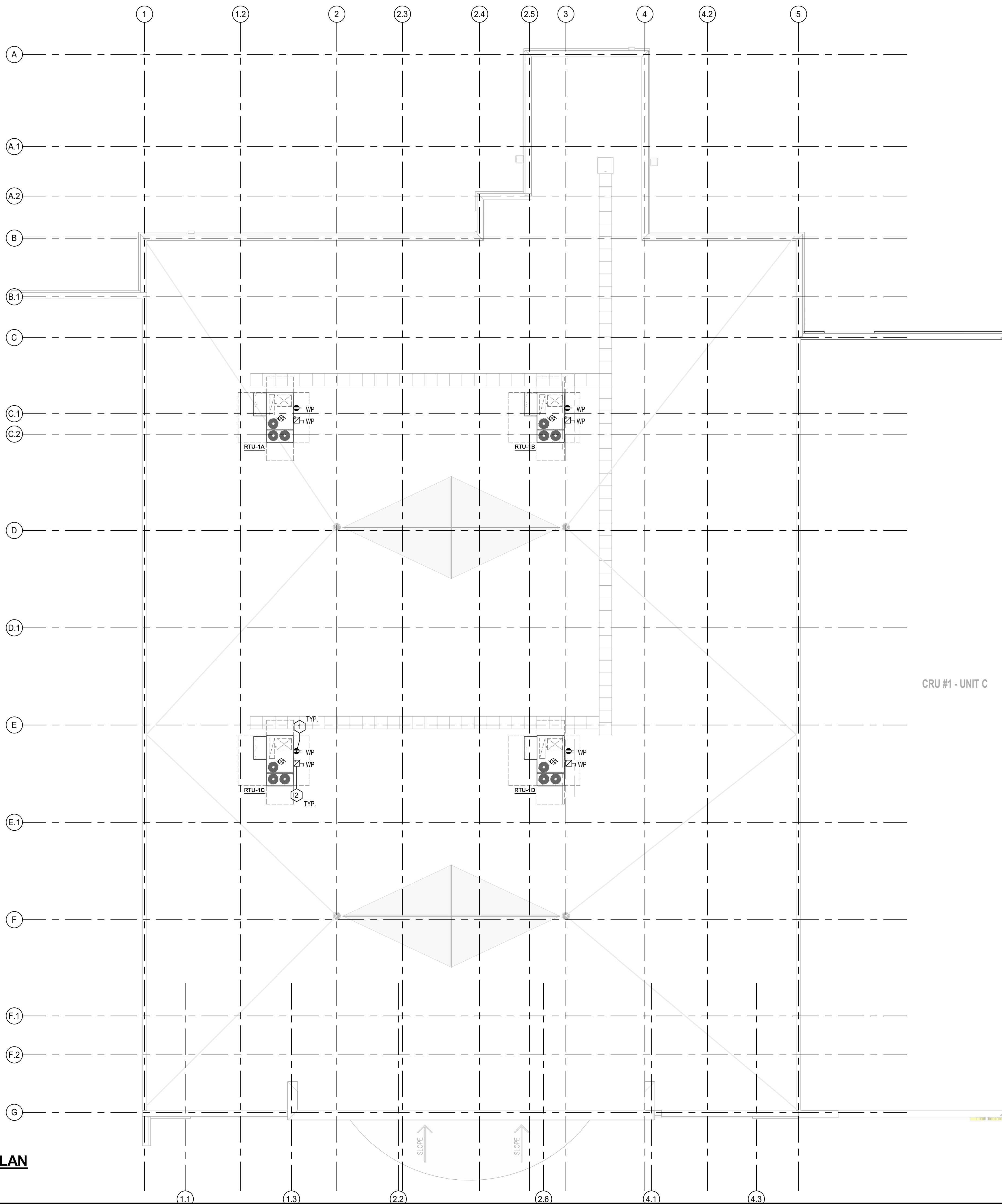
No.	Date	Revision
4	APR 02, 2024	ISSUED FOR TENDER

**ISSUES/REVISION TABLE**

Project: **WESTDELL** DEVELOPMENT CORP  
1300 FANSHAWE PARK ROAD, EAST. - CRU #1-UNIT B  
1300 FANSHAWE PARK ROAD, EAST, LONDON, ON

Drawing Title: **ELECTRICAL LAYOUT - FLOOR PLAN**

Drawn By: D.K. Scale: AS INDICATED  
Checked By: W.A. Plot Date: APR 02, 2024  
Project Date: JAN 2024  
Project No: 2023-102  
Drawing No: **E100** Revision: **4**



**ELECTRICAL ROOF PLAN**

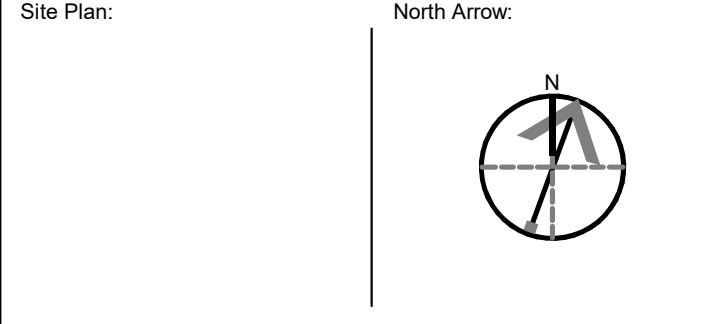
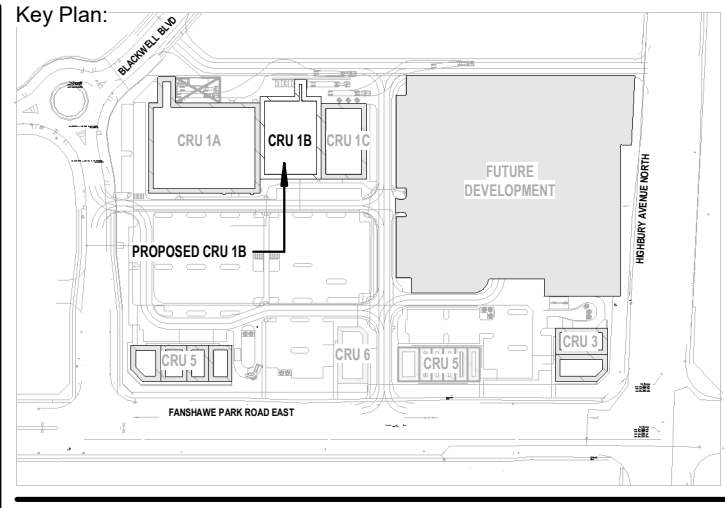
SCALE: 1 : 100

**GENERAL NOTES:**

- ALLOW ADEQUATE SPACING AROUND ALL CONDUIT & CABLE PENETRATIONS FOR PROPER FIRE STOPPING. CONSULT WITH G.C. ON SITE. ELECTRICAL CONTRACTOR TO ENSURE ARMoured & COMMUNICATION CABLES ARE NOT RUN IN CONTACT WITH CPVC SPRINKLER OR WATER PIPING.
- ELECTRICAL CONTRACTOR TO ENSURE ARMoured & COMMUNICATION CABLES ARE NOT RUN IN CONTACT WITH CPVC SPRINKLER OR WATER PIPING.
- ENSURE EXIT LIGHTS ARE VISIBLE BELOW ALL PIPING AND OBSTRUCTIONS.
- NO SERVICES ARE TO BE INSTALLED IN TRANSFORMER VAULTS, ELEVATOR MACHINE ROOMS OR EXIT STAIRWELLS UNLESS THEY SERVE THE ROOM THEY ARE INSTALLED IN, OR ARE INSTALLED WITHIN A FIRE RATED BULKHEAD.

**ELECTRICAL KEYNOTES (DENOTED BY):**

1. ALL RECEPTACLES ON THE ROOF ARE TO BE MOUNTED AT 36" ABOVE THE TOP OF THE ROOFING MATERIAL AND PROTECTED FROM MECHANICAL DAMAGE. ENSURE GFCI PROTECTION (TYPICAL).
2. ROOF TOP UNITS PROVIDED BY MECHANICAL ELECTRICAL CONTRACTOR TO INSTALL AND PROVIDE WEATHERPROOF NON-FUSED DISCONNECTING MEANS AT UNIT RUN FEEDER BACK TO ELECTRICAL SERVICE LOCATION FOR THAT TENANT. REFER TO DISTRIBUTION DIAGRAM ON DRAWING E300 (TYPICAL).
3. LOCATION OF EXTERIOR LIGHTING PHOTOCCELL.



Seal: \_\_\_\_\_ Seal: \_\_\_\_\_

**General Notes:**  
IT IS THE RESPONSIBILITY OF THE OWNER, GENERAL AND/OR TENANT CONTRACTOR AND ALL SUB-TRADES TO BE FAMILIAR WITH THE PROJECT AS A WHOLE. ALL DISCREPANCIES AND DIMENSIONAL ERRORS ON THE PLANS AND RELATED DOCUMENTS MUST BE REPORTED TO CREATIVE STRUCTURES (CS) PRIOR TO COMMENCING ANY WORK.  
DO NOT SCALE DRAWING. FOR CONSTRUCTION DRAWINGS MUST HAVE ORIGINAL CONSULTANTS STAMP AND SIGNATURE. ALL CONSTRUCTION AND MATERIALS MUST CONFORM WITH APPLICABLE CODES AND C.M.H.C. STANDARDS AND BE APPROVED BY OWNER.  
THE CONTENTS OF THIS DRAWING REMAIN THE COPYRIGHT PROPERTY OF CREATIVE STRUCTURES (CS) AND SHALL NOT BE COPIED OR REPRODUCED IN WHOLE OR IN PART WITHOUT WRITTEN CONSENT OF CREATIVE STRUCTURES.  
THESE DRAWINGS AND ALL DETAILS ARE FOR THIS PROJECT ONLY AND SHOULD NOT BE USED FOR ANY OTHER WORK.  
IT IS THE RESPONSIBILITY OF THE APPROPRIATE CONTRACTOR TO CHECK AND VERIFY ALL DIMENSIONS ON SITE AND REPORT ALL ERRORS AND/OR OMISSIONS TO CREATIVE STRUCTURES LTD. PRIOR TO COMMENCING WORK. ALL DIMENSIONS AND LEVELS ARE APPROXIMATE AND SHOULD BE CONFIRMED BY OWNER AND GENERAL CONTRACTOR PRIOR TO CONSTRUCTION.  
ALL CONTRACTORS MUST COMPLY WITH ALL PERTINENT BUILDING CODE REGULATIONS AND BYLAW'S JURISDICTION.  
THIS DRAWING MUST NOT BE USED FOR CONSTRUCTION UNTIL IT HAS BEEN STAMPED BY CREATIVE STRUCTURES LTD. AND A BUILDING PERMIT HAS BEEN ISSUED AND MARKED "ISSUED FOR CONSTRUCTION". THE DRAWINGS SHALL NOT BE USED FOR PRICING, COSTING, OR TENDER UNLESS INDICATED IN THE REVISION COLUMN AND THESE DRAWINGS ARE NOT COMPLETE AND ANY PRICES BASED ON THESE DRAWINGS MUST INCLUDE ALLOWANCES FOR THIS WITH NO LIABILITY ON CREATIVE STRUCTURES LTD.  
CONSTRUCTION TO BE ACCORDING TO BEST COMMON PRACTICE.  
CONTRACTOR IS FULLY RESPONSIBLE FOR MATTERS AFFECTING CONSTRUCTION.  
ANY MATERIAL ALTERATIONS CARRIED OUT DURING CONSTRUCTION BY THE CONTRACTOR OR ASSOCIATED SUB-CONTRACTORS SHALL BE CONFIRMED WITH THE ENGINEER PRIOR TO INSTALL. FAILURE TO DO SO RESULTS IN FULL CONTRACTOR RESPONSIBILITY FOR SYSTEMS AFFECTED.

No.	Date	Revision
4	APR 02, 2024	ISSUED FOR TENDER

**ISSUES/REVISION TABLE**

Project: **WESTDELL** DEVELOPMENT CORP  
1300 FANSHAWE PARK ROAD, EAST. - CRU #1-UNIT B  
1300 FANSHAWE PARK ROAD, EAST, LONDON, ON

Drawing Title:

**ELECTRICAL LAYOUT - ROOF PLAN**

Drawn By: D.K. Scale: AS INDICATED

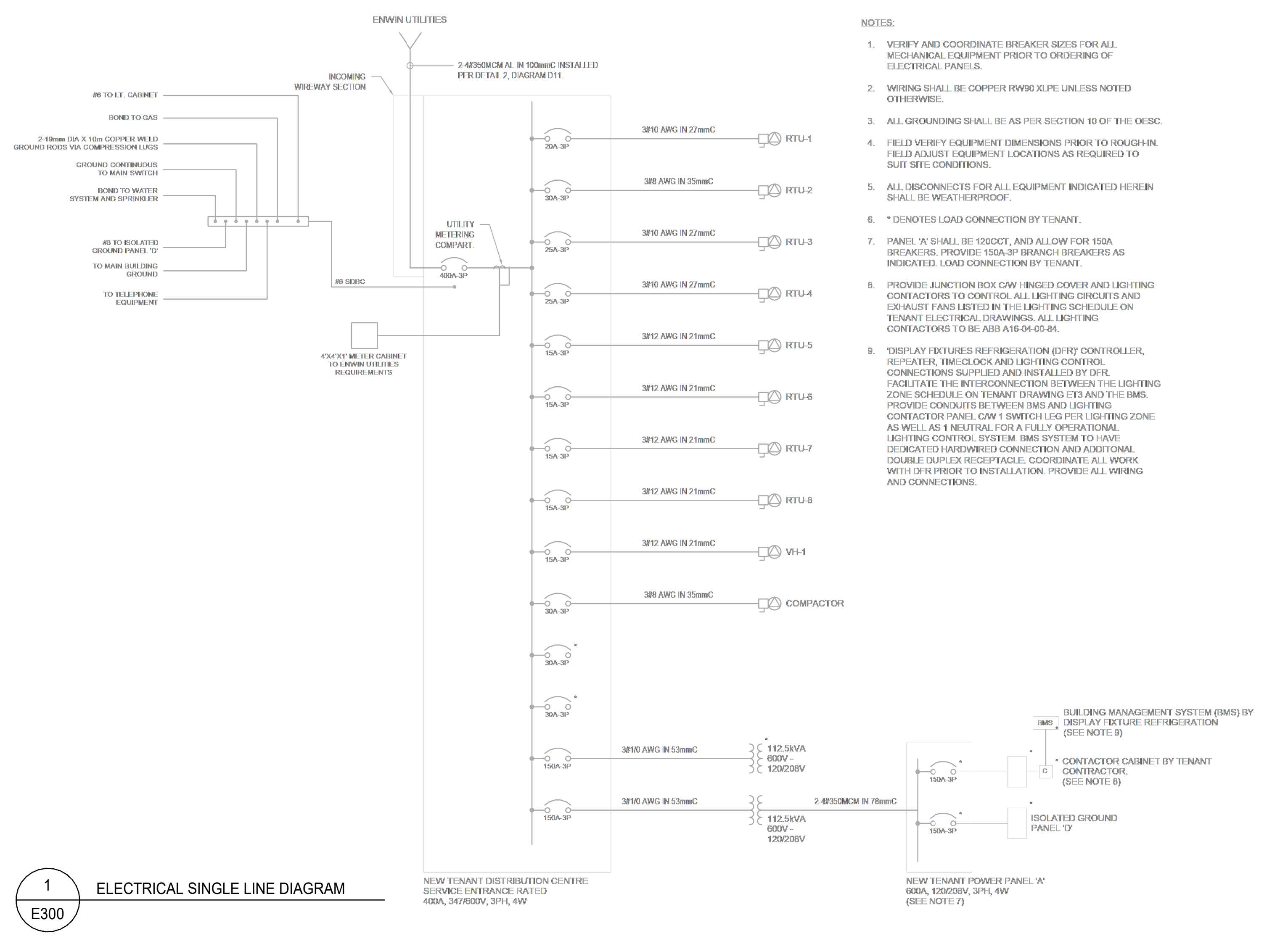
Checked By: W.A. Plot Date: APR 02, 2024

Project Date: JAN 2024

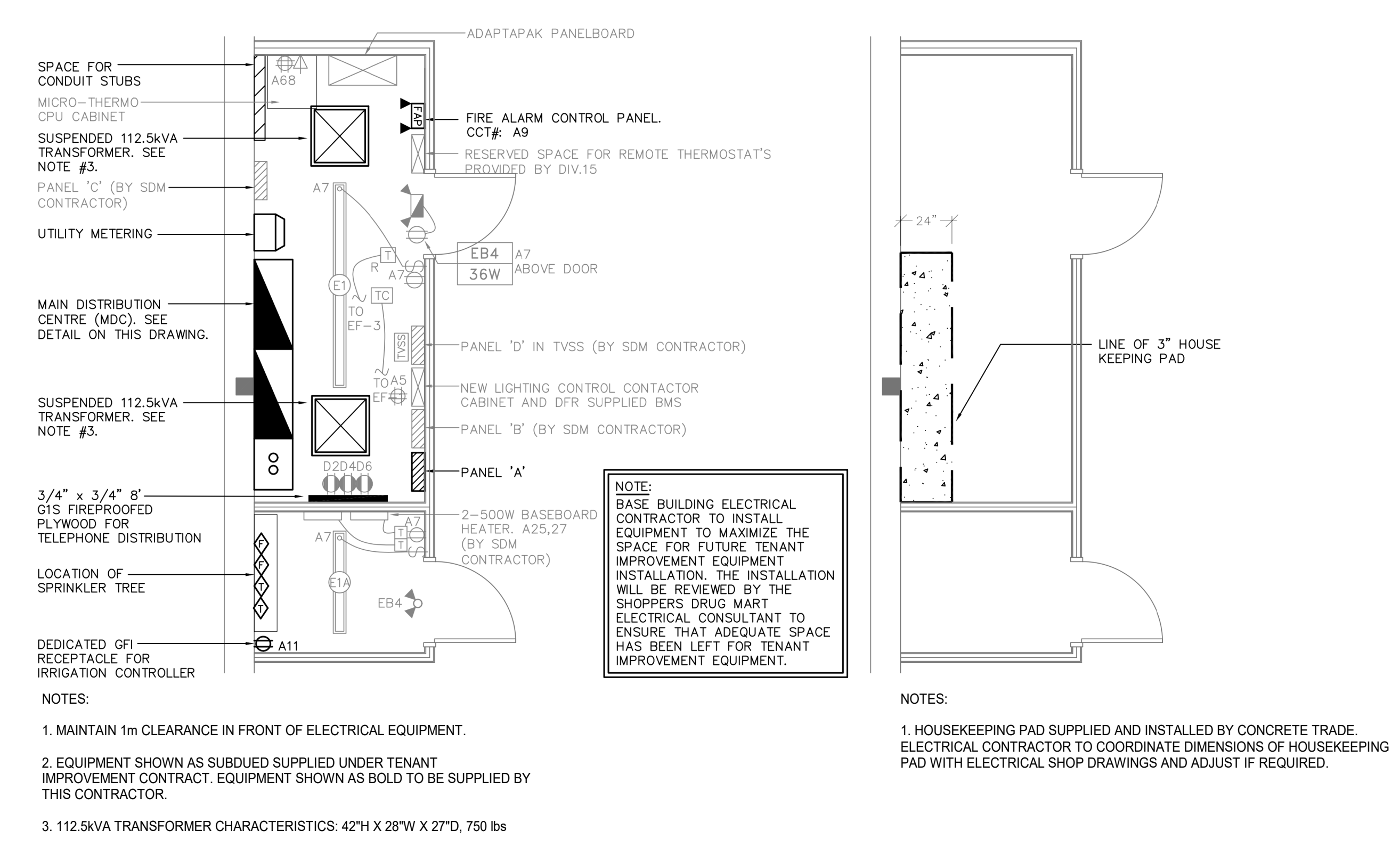
Project No: 2023-102

Drawing No: \_\_\_\_\_ Revision: \_\_\_\_\_

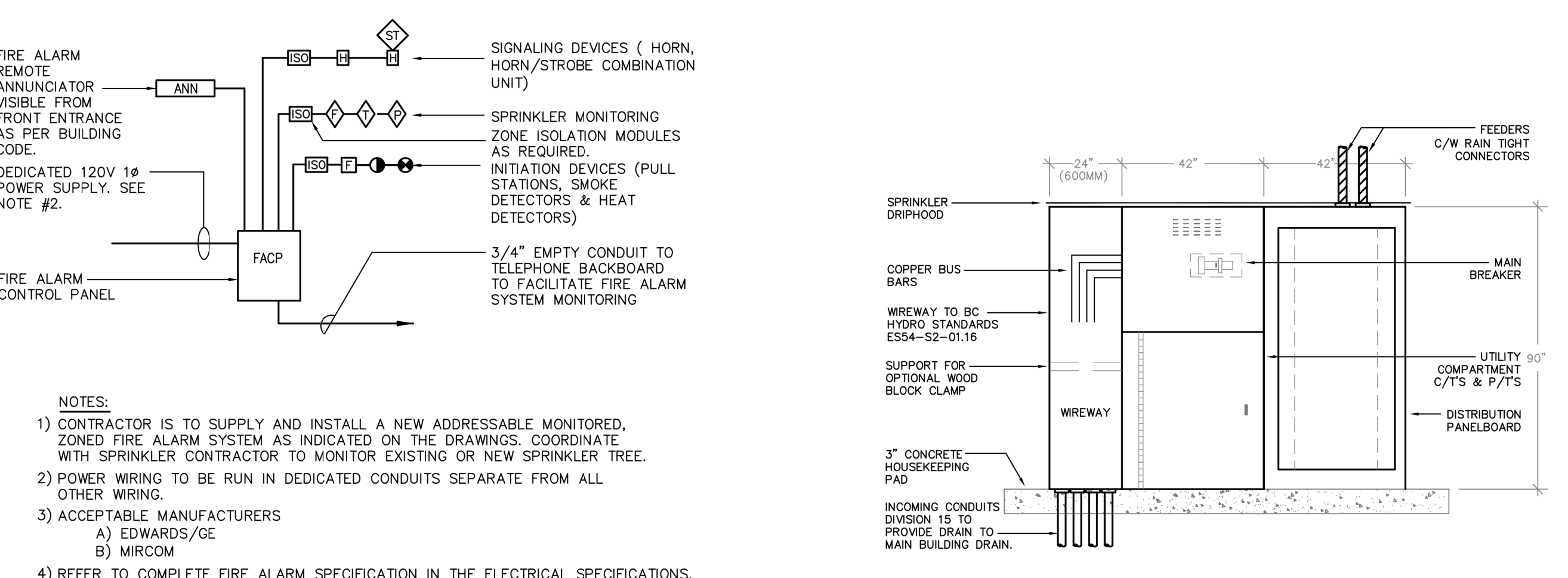
**E101 4**



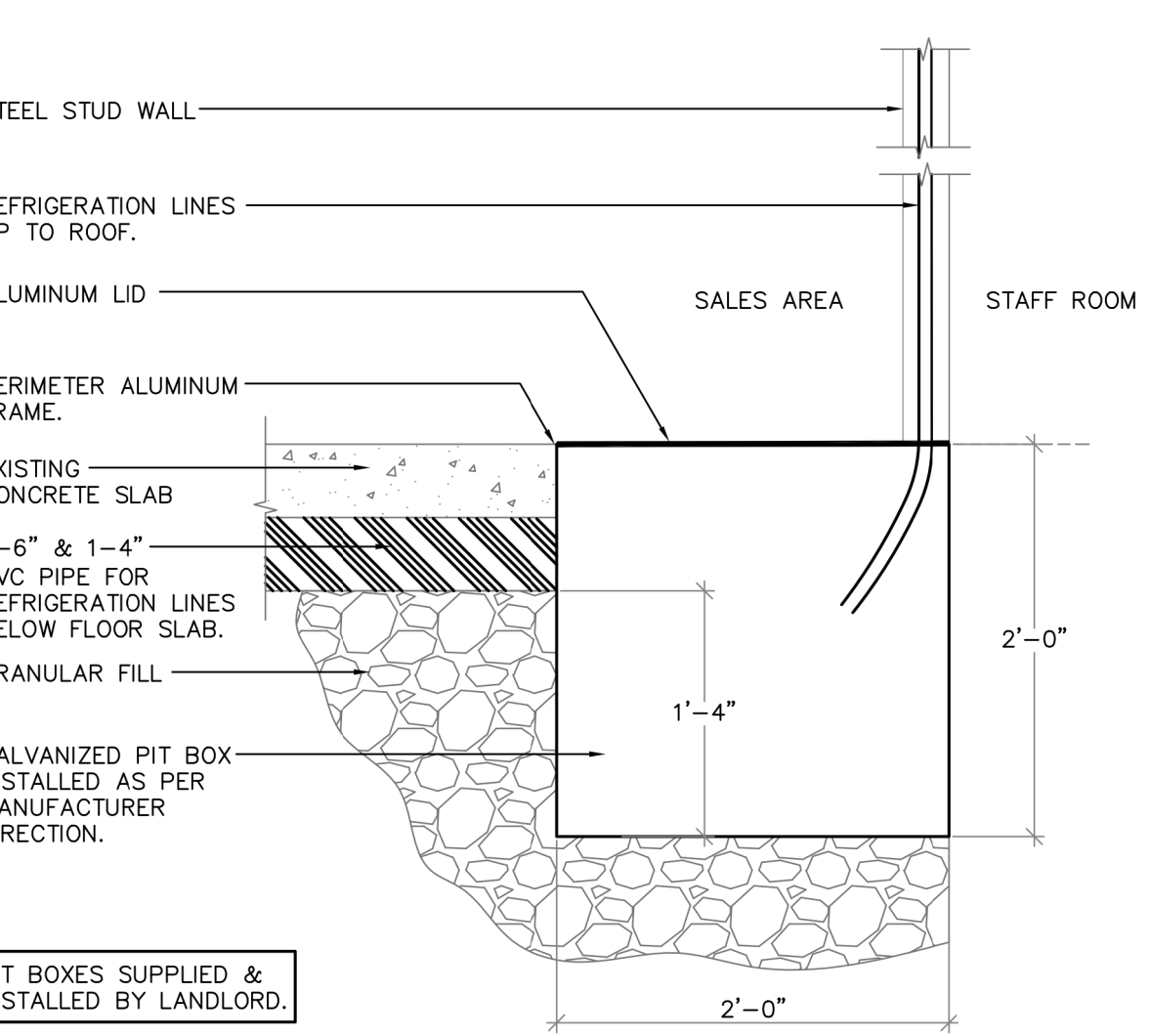
**1 ELECTRICAL SINGLE LINE DIAGRAM**  
E300



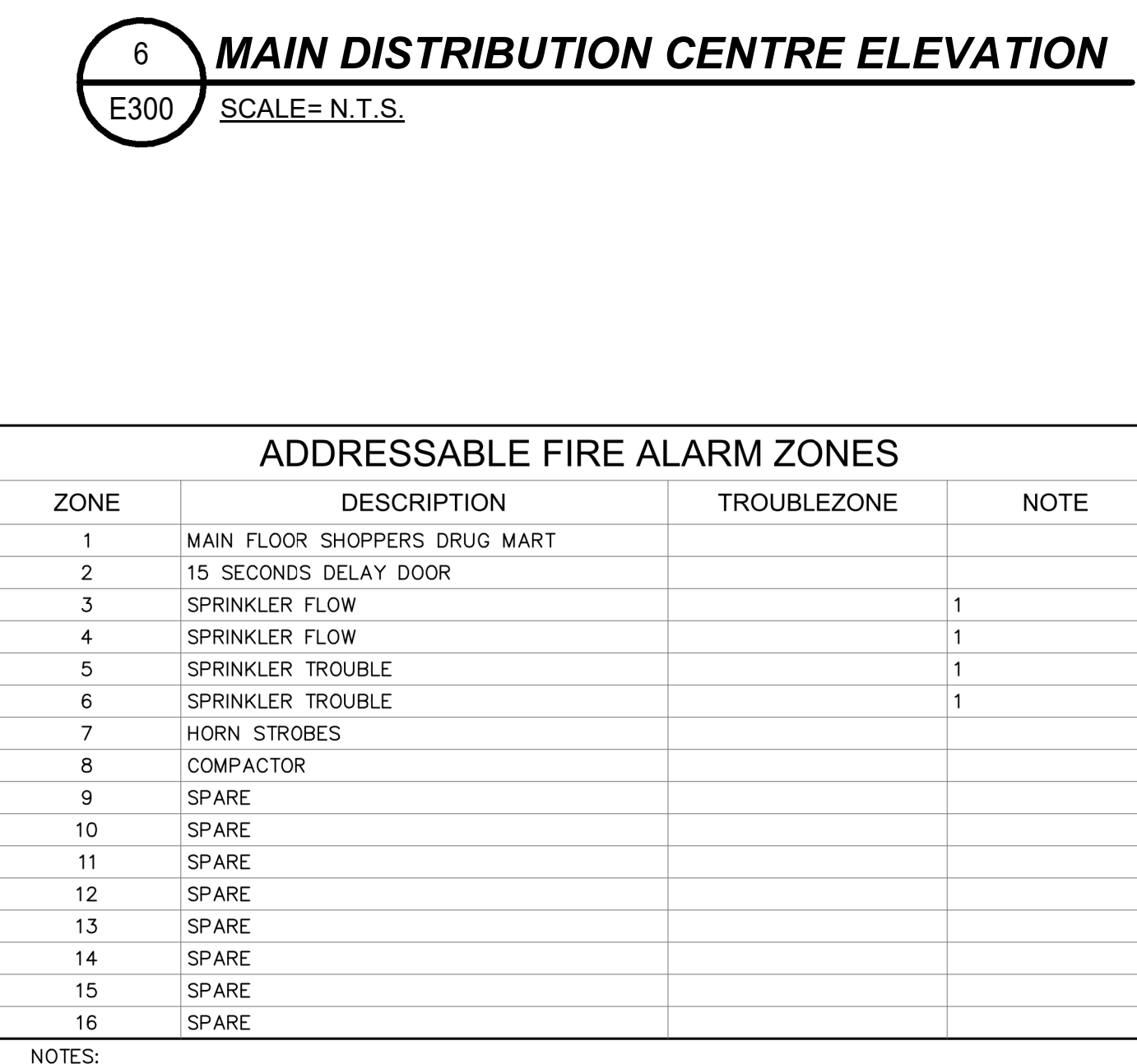
**2 ELECTRICAL ROOM DETAIL**  
E300 SCALE= N.T.S.



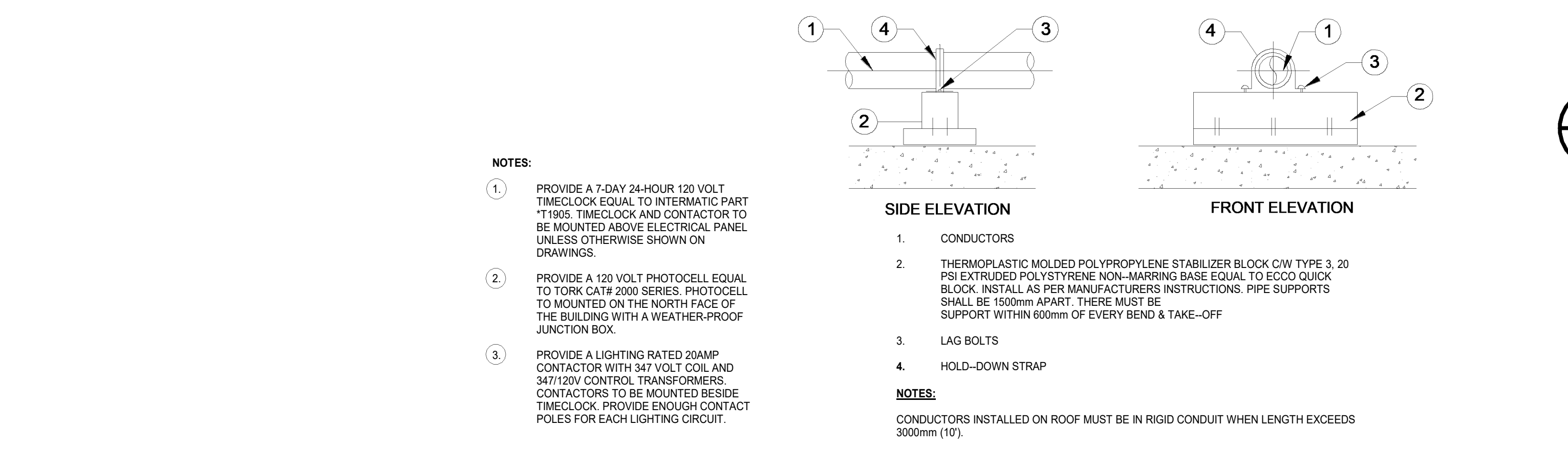
**5 FIRE ALARM RISER**  
E300 SCALE= N.T.S.



**7 REFRIGERATION PIT BOX DETAIL**  
E300 SCALE= N.T.S.



**6 MAIN DISTRIBUTION CENTRE ELEVATION**  
E300 SCALE= N.T.S.



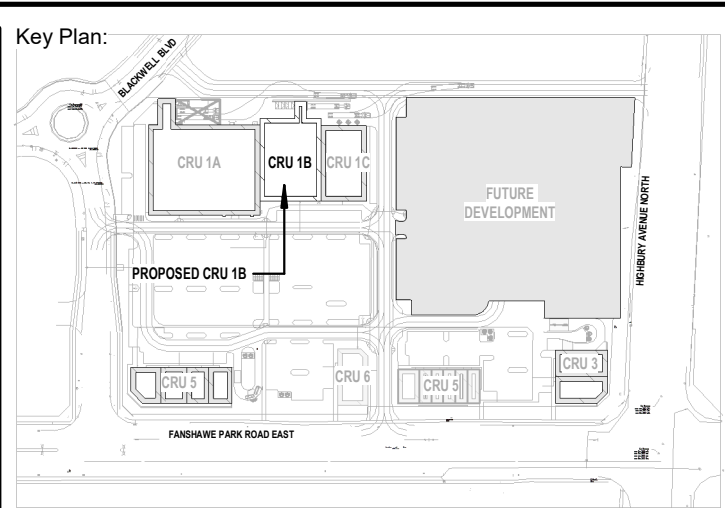
**3 EXTERIOR LIGHTING CONTROL DETAIL**  
E300 SCALE= N.T.S.

**4 ROOF CONDUCTOR INSTALLATION**  
E300 SCALE= N.T.S.

**ADDRESSABLE FIRE ALARM ZONES**

ZONE	DESCRIPTION	TROUBLEZONE	NOTE
1	MAIN FLOOR SHOPPERS DRUG MART		
2	15 SECONDS DELAY DOOR		
3	SPRINKLER FLOW		1
4	SPRINKLER FLOW		1
5	SPRINKLER TROUBLE		1
6	SPRINKLER TROUBLE		1
7	HORN STROBES		
8	COMPACTOR		
9	SPARE		
10	SPARE		
11	SPARE		
12	SPARE		
13	SPARE		
14	SPARE		
15	SPARE		
16	SPARE		

**8 ADDRESSABLE FIRE ALARM ZONES**  
E300 SCALE= N.T.S.



Consultant: **CREATIVE STRUCTURES**  
CS@CREATIVESTR.CA

Seal: Seal:

**General Notes:**

IT IS THE RESPONSIBILITY OF THE OWNER, GENERAL AND/OR TENANT CONTRACTOR AND ALL SUB-TRADES TO BE FAMILIAR WITH THE PROJECT AS A WHOLE. ALL DISCREPANCIES AND DIMENSIONAL ERRORS ON THE PLANS AND RELATED DOCUMENTS MUST BE REPORTED TO CREATIVE STRUCTURES (CS) PRIOR TO COMMENCING ANY WORK.

DO NOT SCALE DRAWING. FOR CONSTRUCTION DRAWINGS MUST HAVE ORIGINAL CONSULTANTS STAMP AND SIGNATURE. ALL CONSTRUCTION AND MATERIALS MUST CONFORM WITH APPLICABLE CODES AND C.M.H.C. STANDARDS AND BE APPROVED BY OWNER.

THE CONTENTS OF THIS DRAWING REMAIN THE COPYRIGHT PROPERTY OF CREATIVE STRUCTURES (CS) AND SHALL NOT BE COPIED OR REPRODUCED IN WHOLE OR IN PART WITHOUT WRITTEN CONSENT OF CREATIVE STRUCTURES.

THESE DRAWINGS AND ALL DETAILS ARE FOR THIS PROJECT ONLY AND SHOULD NOT BE USED FOR ANY OTHER WORK.

IT IS THE RESPONSIBILITY OF THE APPROPRIATE CONTRACTOR TO CHECK AND VERIFY ALL DIMENSIONS ON SITE AND REPORT ALL ERRORS AND/OR OMISSIONS TO CREATIVE STRUCTURES LTD. PRIOR TO COMMENCING WORK. ALL DIMENSIONS AND LEVELS ARE APPROXIMATE AND SHOULD BE CONFIRMED BY OWNER AND GENERAL CONTRACTOR PRIOR TO CONSTRUCTION.

ALL CONTRACTORS MUST COMPLY WITH ALL PERTINENT BUILDING CODE REGULATIONS AND BYLAW'S JURISDICTION.

THIS DRAWING MUST NOT BE USED FOR CONSTRUCTION UNTIL IT HAS BEEN ISSUED AND MARKED "ISSUED FOR CONSTRUCTION". THE DRAWINGS SHALL NOT BE USED FOR PRICING, COSTING, OR TENDER UNLESS INDICATED IN THE REVISION COLUMN AND THESE DRAWINGS ARE NOT COMPLETE AND ANY PRICES BASED ON THESE DRAWINGS MUST INCLUDE ALLOWANCES FOR THIS WITH NO LIABILITY ON CREATIVE STRUCTURES LTD.

CONSTRUCTION TO BE ACCORDING TO BEST COMMON PRACTICE.

CONTRACTOR IS FULLY RESPONSIBLE FOR MATTERS AFFECTING CONSTRUCTION.

ANY MATERIAL ALTERATIONS CARRIED OUT DURING CONSTRUCTION BY THE CONTRACTOR OR ASSOCIATED SUB-CONTRACTOR SHALL BE CONFIRMED WITH THE ENGINEER PRIOR TO INSTALL. FAILURE TO DO SO RESULTS IN FULL CONTRACTOR RESPONSIBILITY FOR SYSTEMS AFFECTED.

**ISSUES/REVISION TABLE**

No.	Date	Revision
4	APR 02, 2024	ISSUED FOR TENDER

Project: **WESTOELL DEVELOPMENT CORP**  
1300 FANSHAWE PARK ROAD, EAST. - CRU #1-UNIT B  
1300 FANSHAWE PARK ROAD, EAST, LONDON, ON

Drawing Title: **DISTRIBUTION DIAGRAM AND ELECTRICAL DETAILS**

Drawn By: D.K. Scale: AS INDICATED  
Checked By: W.A. Plot Date: APR 02, 2024

Project Date: JAN 2024  
Project No: 2023-102  
Drawing No: E300 Revision: 4

**E300 4**

CONTRACTOR SUPPLIED LIGHT FIXTURE SCHEDULE						
TYPE	MFR.	CAT. #	DESCRIPTION	LAMPS	LOCATION	MOUNTING
E13B	CPR	HALO HC630D010-HM634840-61MDC	RECESSED 6" LED DOWNLIGHT, 6" CONICAL REFLECTOR c/w SPECULAR CLEAR FINISH	27.2W iLED, 4000K, 80 CRI	VESTIBULE CANOPY	RECESSED
E20	CPR	LUMARK XTOR3B-W-AP	SMALL LED EXTERIOR WALL PACK, GREY	26W LED, 4000K	EXTERIOR GRAPHIC LIGHTING	WALL/SURFACE
E21	CPR	LUMARK XTOR6B-N-120	LARGE LED EXTERIOR WALL PACK, GREY	58W LED, 4000K	EXTERIOR	WALL/SURFACE
E22	CPR	LUMARK LDRV-T4-F04-120-BK	LED AREA LUMINAIRE, ARM MOUNT SINGLE c/w 20', 4" SQUARE STEEL POLE POWDER COAT PAINTED BLACK TYPE 4 DISTRIBUTION	7 LED LIGHT BARS (102W)	PARKING LOT	20 FOOT POLE, SEE DETAIL ON DRAWING BE1
E23	CPR	LUMARK 4XLDREV-T4-F04-120-BK	LED AREA LUMINAIRE, ARM MOUNT FOUR c/w 20', 4" SQUARE STEEL POLE POWDER COAT PAINTED BLACK TYPE 4 DISTRIBUTION	4x7 LED LIGHT BARS (102W)	PARKING LOT	20 FOOT POLE, SEE DETAIL ON DRAWING BE1

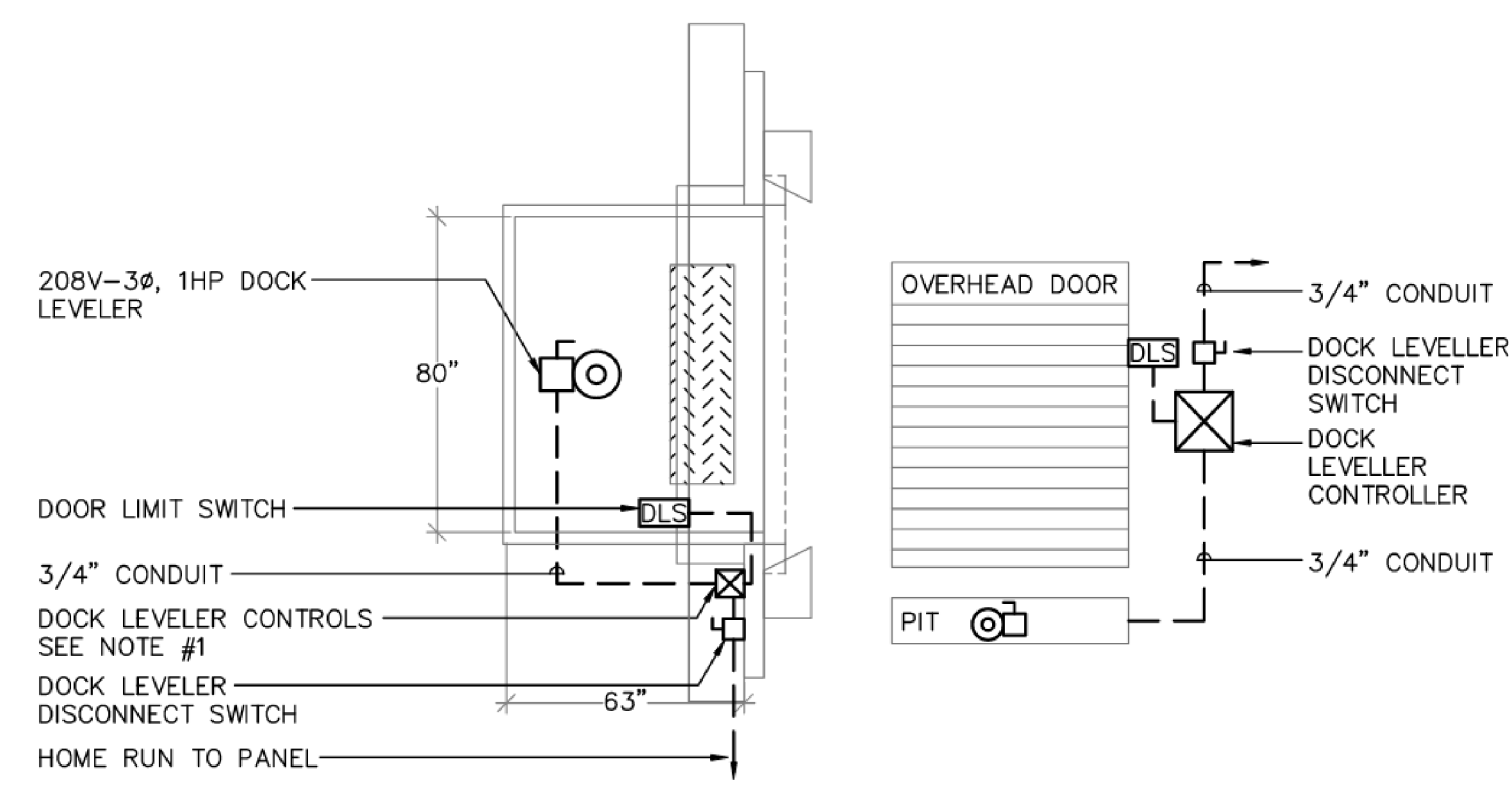
NOTE:  
 1) ALL FIXTURES WITHIN THIS SCHEDULE TO BE SUPPLIED AND INSTALLED BY BASE BUILDING CONTRACTOR.  
 2) ALL SUPPORTING STRUCTURE FIXTURES ARE TO BE COMPLETED BY THE BASE BUILDING CONTRACTOR.

CONTRACTOR SUPPLIED EXIT AND EMERGENCY BATTERY UNIT SCHEDULE					
TYPE	MFR.	CAT. #	DESCRIPTION	LOCATION	MOUNTING
EX	EMERGI-LITE	ES-1/2-W-UI	EMERGI-LITE ES SERIES ALL-METAL PICTOGRAM 120/347 AC INPUT, SELF-POWERED UNIVERSAL EXIT SIGN C/W LEFT/RIGHT PICTOGRAM	THROUGHOUT STORE	SURFACE
EXA	EMERGI-LITE	EDE-1/2-W-UI	EMERGI-LITE EDE SERIES EDGE-LIT 120 AC INPUT, SELF-POWERED UNIVERSAL EXIT SIGN C/W LEFT/RIGHT PICTOGRAM	COSMETICS	SURFACE

- NOTE:  
 1) CONTRACTOR IS TO SUPPLY AND INSTALL EMERGENCY LIGHTING EQUIPMENT AND EXIT SIGNS.  
 2) EMERGENCY LIGHT UNITS MUST BE FED FROM NORMAL LIGHTING CIRCUITS IN AREAS IN WHICH THEY SERVE.  
 3) CONTRACTOR TO WIRE ALL REMOTE HEADS TO BATTERY PACK. SEE TABLE BELOW FOR WIRE SIZE. ALL WIRING TO BE RUN IN CONDUIT MINIMUM 1/2"-2#12 RW90.  
 4) EMERGENCY LIGHTING TO BE MINIMUM EMERGI-LITE COMMERCIAL SPEC GRADE STANDARD.

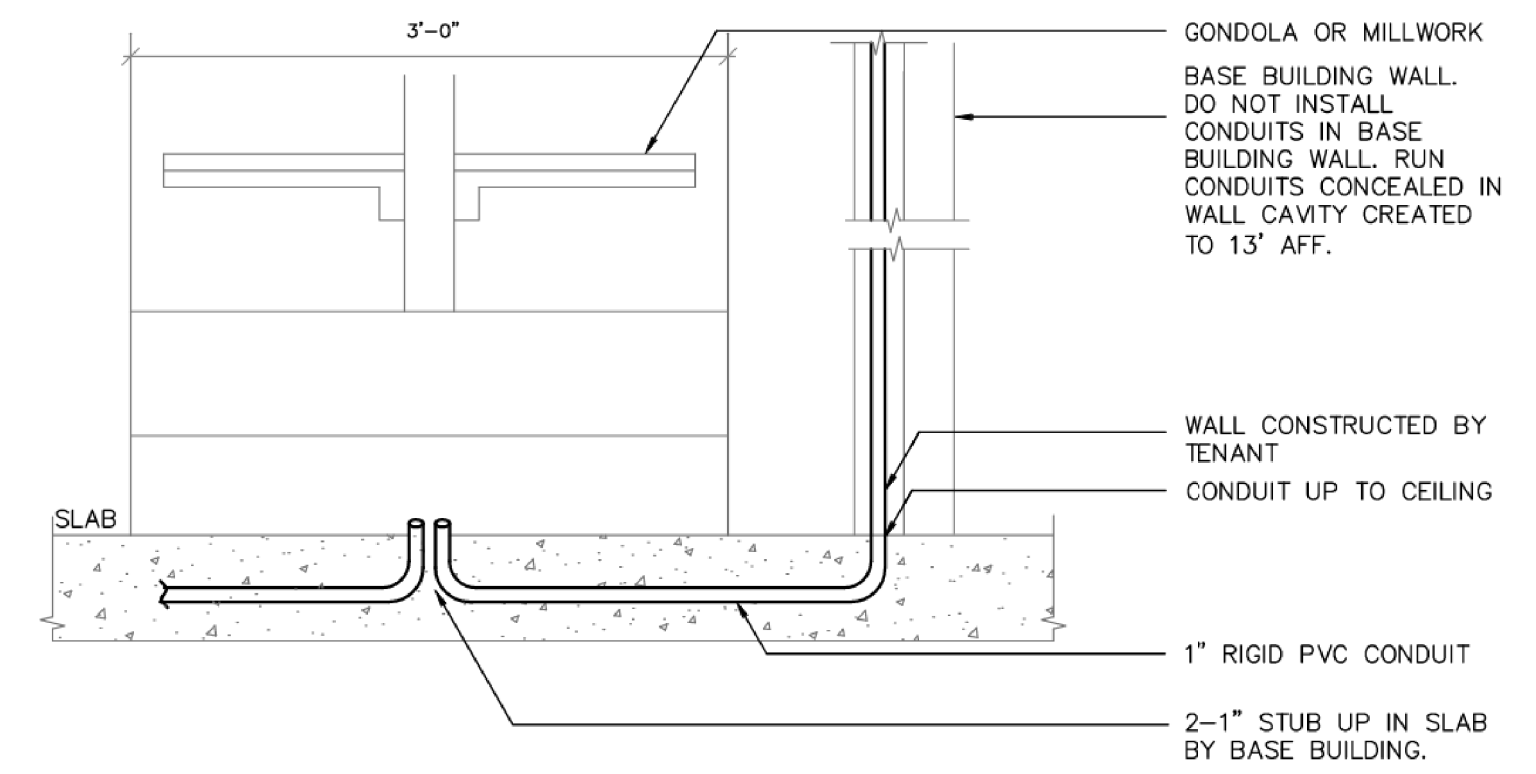
### MECHANICAL EQUIPMENT DIVISION OF RESPONSIBILITY

- ALL EQUIPMENT SUPPLIED AND INSTALLED BY DIV. 15 AND WIRED AND ELECTRICALLY CONNECTED BY DIV. 16.
- SUPPLY, INSTALL AND CONNECT RAINTIGHT DISCONNECTS FOR ALL UNITS. SEE PLANS FOR LOCATIONS.
- ALL 120V WORK OR GREATER IS THE RESPONSIBILITY OF THE ELECTRICAL TRADES. COORDINATE WITH MECHANICAL TRADES.
- ALL 24V WIRING AND SEQUENCING BY MECHANICAL TRADES.
- PROVIDE 3/4" CONDUIT FOR THERMOSTATS. THERMOSTATS BY MECHANICAL TRADES.
- PROVIDE 5-20R RECEPTACLES FOR HVAC EQUIPMENT MAINTENANCE.



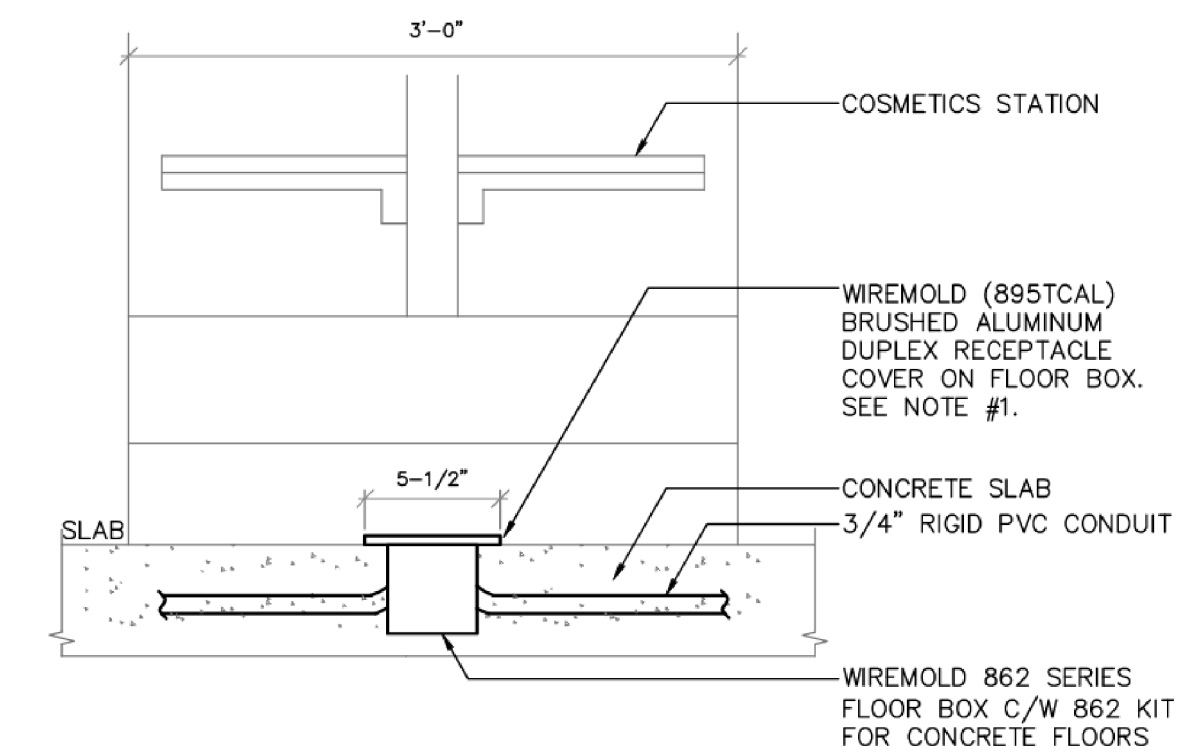
**2**  
BE6 DOCK LEVELER DETAIL

- NOT TO SCALE  
 NOTES:  
 1) CONTRACTOR TO SUPPLY AND INSTALL SINGLE PUSH BUTTON CONTROLLER (BLUE GIANT-SP2). INTER-CONNECT WITH DOCK LEVELER AND OVERHEAD DOOR LIMIT SWITCH.  
 2) DISCONNECT SWITCH FOR DOCK LEVELER c/w ALL REQUIRED INTERCONNECTING CONDUIT AND WIRING TO CONTROL PANEL AND MOTOR. PROVIDE A LIMIT SWITCH WIRED IN TO DISCONNECT THE DOCK LEVELER UNTIL THE RECEIVING DOOR IS AT 3'-0" A.F.F.



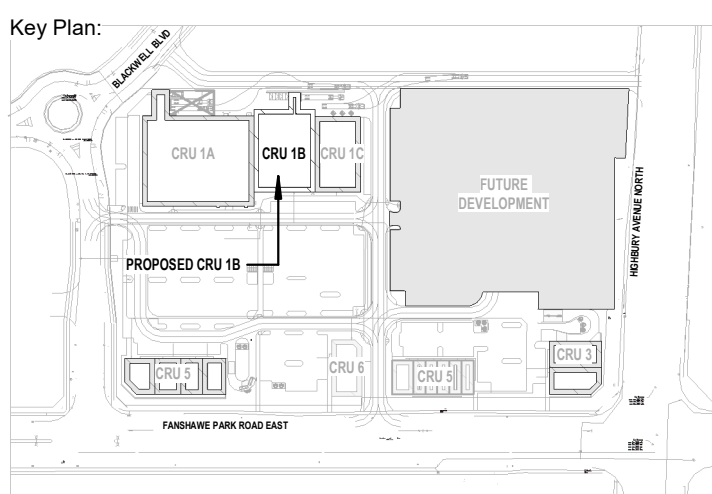
**3**  
BE6 TYPICAL FLOOR BOX CONNECTION DETAIL

- NOT TO SCALE  
 NOTE:  
 1) CONTRACTOR TO ALLOW FOR X-RAY & SAW CUT OF EXISTING SLAB TO FACILITATE THE INSTALLATION OF NEW CONDUITS.



**4**  
BE6 TYPICAL COSMETICS FLOOR BOX CONNECTION DETAIL

- NOT TO SCALE  
 NOTES:  
 1.) CONTRACTOR TO ENSURE THE COVER IS TO SIT ON TOP OF THE SLAB AND NOT RECESSED INTO THE SLAB.  
 2.) CONTRACTOR TO ALLOW FOR X-RAY & SAW CUT OF EXISTING SLAB TO FACILITATE THE INSTALLATION OF NEW CONDUITS. ALL FLOOR PENETRATIONS MUST BE SCANNED AND/OR X-RAYED BY THE CONTRACTOR, AND APPROVED BY THE LANDLORD PRIOR TO CORE DRILLING. THEY MUST BE SLEEVED, CAULKED, WATERPROOFED AND FIREPROOFED AS PER THE LANDLORD'S STANDARDS.



Site Plan: North Arrow:

Consultant:



CS@CREATIVESTR.CA

Seal: Seal:

General Notes:

IT IS THE RESPONSIBILITY OF THE OWNER, GENERAL AND/OR TENANT CONTRACTOR AND ALL SUB-TRADES TO BE FAMILIAR WITH THE PROJECT AS A WHOLE. ALL DISCREPANCIES AND DIMENSIONAL ERRORS ON THE PLANS AND RELATED DOCUMENTS MUST BE REPORTED TO CREATIVE STRUCTURES (CS) PRIOR TO COMMENCING ANY WORK.  
 DO NOT SCALE DRAWING. FOR CONSTRUCTION DRAWINGS MUST HAVE ORIGINAL CONSULTANTS STAMP AND SIGNATURE. ALL CONSTRUCTION AND MATERIALS MUST CONFORM WITH APPLICABLE CODES AND C.M.H.C. STANDARDS AND BE APPROVED BY OWNER.  
 THE CONTENTS OF THIS DRAWING REMAIN THE COPYRIGHT PROPERTY OF CREATIVE STRUCTURES (CS) AND SHALL NOT BE COPIED OR REPRODUCED IN WHOLE OR IN PART WITHOUT WRITTEN CONSENT OF CREATIVE STRUCTURES.  
 THESE DRAWINGS AND ALL DETAILS ARE FOR THIS PROJECT ONLY AND SHOULD NOT BE USED FOR ANY OTHER WORK.  
 IT IS THE RESPONSIBILITY OF THE APPROPRIATE CONTRACTOR TO CHECK AND VERIFY ALL DIMENSIONS ON SITE AND REPORT ALL ERRORS AND/OR OMISSIONS TO CREATIVE STRUCTURES LTD. PRIOR TO COMMENCING WORK. ALL DIMENSIONS AND LEVELS ARE APPROXIMATE AND SHOULD BE CONFIRMED BY OWNER AND GENERAL CONTRACTOR PRIOR CONSTRUCTION.  
 ALL CONTRACTORS MUST COMPLY WITH ALL PERTINENT BUILDING CODE REGULATIONS AND BYLAW'S JURISDICTION.  
 THIS DRAWING MUST NOT BE USED FOR CONSTRUCTION UNTIL IT HAS BEEN STAMPED BY CREATIVE STRUCTURES LTD. AND A BUILDING PERMIT HAS BEEN ISSUED AND MARKED "ISSUED FOR CONSTRUCTION". THE DRAWINGS SHALL NOT BE USED FOR PRICING, COSTING, OR TENDER UNLESS INDICATED IN THE REVISION COLUMN AND THESE DRAWINGS ARE NOT COMPLETE AND ANY PRICES BASED ON THESE DRAWINGS MUST INCLUDE ALLOWANCES FOR THIS WITH NO LIABILITY ON CREATIVE STRUCTURES LTD.  
 CONSTRUCTION TO BE ACCORDING TO BEST COMMON PRACTICE.  
 CONTRACTOR IS FULLY RESPONSIBLE FOR MATTERS AFFECTING CONSTRUCTION.  
 ANY MATERIAL ALTERATIONS CARRIED OUT DURING CONSTRUCTION BY THE CONTRACTOR OR ASSOCIATED SUB-CONTRACTOR SHALL BE CONFIRMED BY THE ENGINEER PRIOR TO INSTALL. FAILURE TO DO SO RESULTS IN FULL CONTRACTOR RESPONSIBILITY FOR SYSTEMS AFFECTED.

No.	Date	Revision
4	APR 02, 2024	ISSUED FOR TENDER

### ISSUES/REVISION TABLE

Project:

**WESTDELL**  
DEVELOPMENT CORP

1300 FANSHAW PARK ROAD, EAST. - CRU #1-UNIT B

1300 FANSHAW PARK ROAD, EAST, LONDON, ON

Drawing Title:

### ELECTRICAL SCHEDULES AND DETAILS

Drawn By: D.K. Scale: AS INDICATED

Checked By: W.A. Plot Date: APR 02, 2024

Project Date: JAN 2024

Project No: 2023-102

Drawing No:

Revision

**E301** **4**